



ICON Pushfit

INTERNAL PUSHFIT CONNECTOR
4" & 6" Sewer Pipe and DWV



PRODUCT CODE	NOMINAL Ø (INCH)	BOX QTY	DESCRIPTION
IC44P	4	6	Connects two pipes having an I.D. range of: 3.90"-4.06"
IC66P	6	6	Connects two pipes having an I.D. range of: 5.83"-6.02"

PRODUCT BENEFITS

- Internal Pushfit connection — **no tools required**
- Can be installed in **30 seconds or less**
- Install in sheared off pipe where standard couplings cannot be used
- No need to expose external surface of pipe
- Meets the requirements of ASTM C1173
- Watertight connection
- Connects pipes of differing or irregular outside diameters
- Pipe stop indicates that the product is properly installed, when it is flush to the pipe end
- Internal lip ensures smooth transition
- Rigid ABS Body provides excellent shear resistance
- Ideal for the connection of plastic (SDR 35, Sch 40), Cast Iron and Copper.
- 4.3 PSI test pressure



**300 S. DAYTON ST.
DAVISON, MI 48423**



FERNCO.COM



STEP 1
Clean and measure pipe I.D.



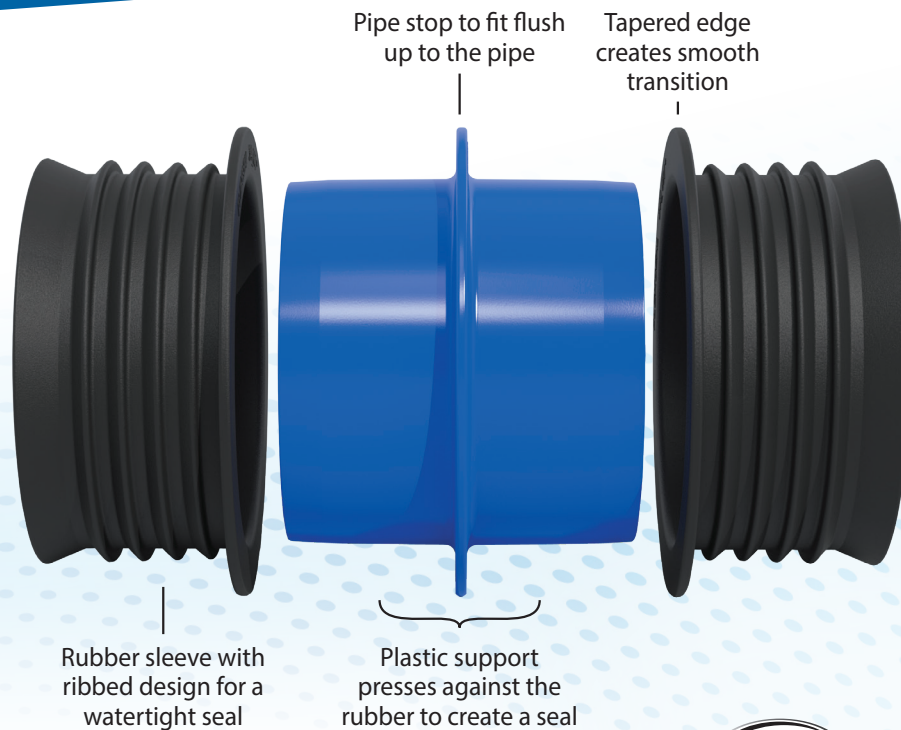
STEP 2
Lubricate gasket O.D. with soap & water solution



STEP 3
Push in place up to the pipe stop



STEP 4
Lubricate gasket and install 2nd pipe
Ensure that the tapered edge on the rubber sleeve does not fold back when inserting into the pipe.



MATERIAL	ABS & EPDM Rubber
TEST PRESSURE	4.3 PSI



Global leaders in flexible couplings,
drainage & plumbing systems