



A global company with a focus on the individual customer.

The Ferenco Joint Sealer Company was formally established in 1964 by an individual contractor looking for a time saving and reliable solution to his pipe connection needs. Mr. Zopfi developed a pre-formed tar donut for use on his own jobs in the Detroit area during the late 1940s.

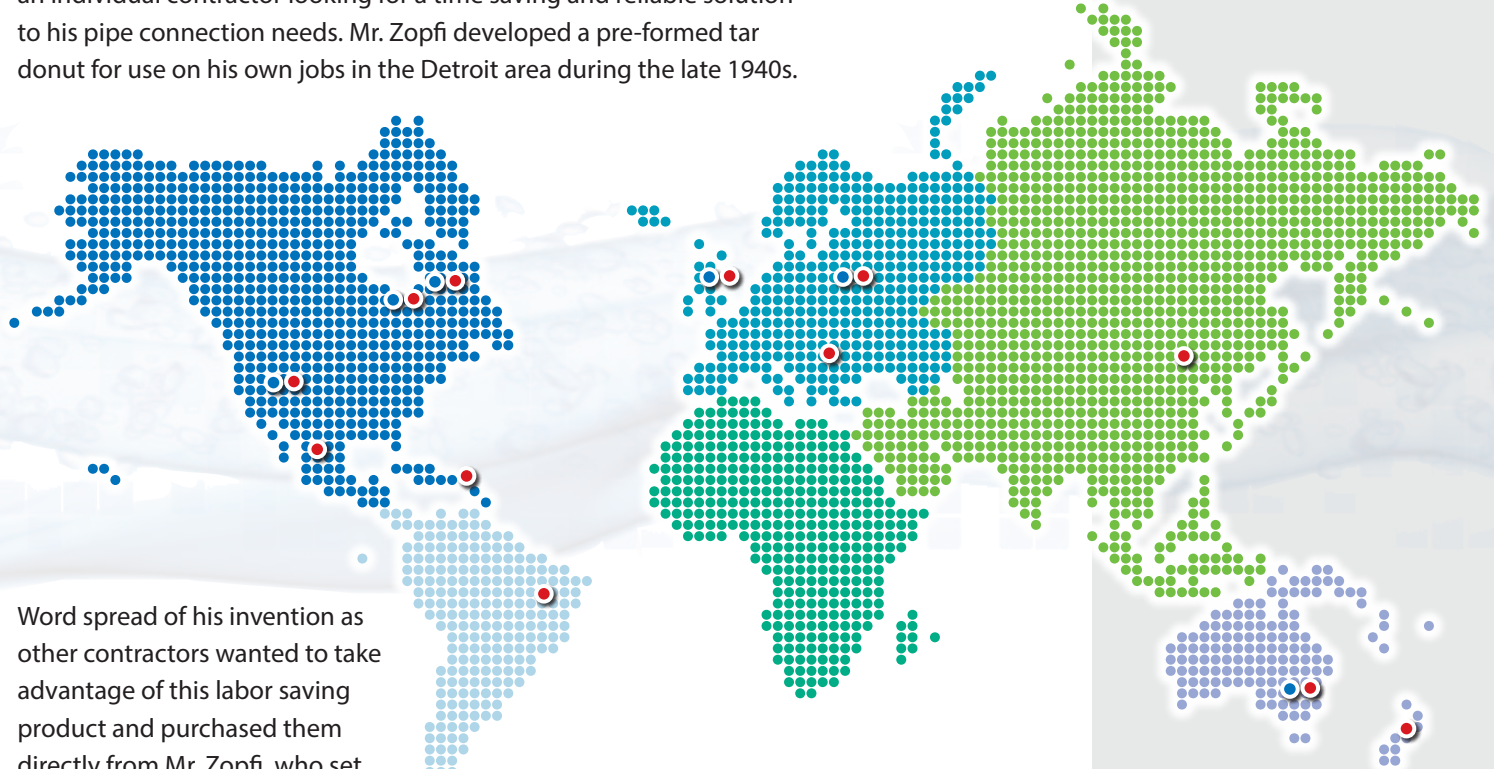
Word spread of his invention as other contractors wanted to take advantage of this labor saving product and purchased them directly from Mr. Zopfi, who set up a small shop in a garage behind his plumbing business.

Since the beginning, Ferenco has continued to grow into more markets and has continued to develop innovative, reliable and easy-to-use products. Ferenco expanded into Canada and then to the West with a location in Reno, Nevada. In August, 2002, Ferenco, Inc. acquired Flex-Seal Couplings LTD, the leading manufacturer of flexible couplings in the European market. Flex-Seal manufactures and distributes couplings in the United Kingdom and Europe. The Flex-Seal acquisition positions Ferenco, Inc. as the number one manufacturer and distributor of flexible couplings in the world.

All of this growth isn't to make Ferenco the biggest company, but the best company. With resources from around the world, Ferenco is able to tap into many innovative minds to create the best products to meet the needs of the individual in the field, trying to get the job done, and done with confidence. From a company that started with one individual, it all comes down to our focus on the individual customer and providing you with a product you can trust.

Global Manufacturing

-  United States
-  Canada
-  United Kingdom
-  Germany
-  Australia



Global Distribution

-  United States
-  Canada
-  European Union
-  Australia
-  New Zealand
-  Puerto Rico
-  Mexico
-  China
-  Brazil



Our Commitment to You

Fernco is committed to giving you the highest level of quality, Fernco quality, at the most competitive price possible. Fernco's goal is to maintain standards of excellence in quality and service, while continuing to be the most innovative company in the industry.

Call For Convenient Ordering And Fast Delivery

Fernco's phone ordering system ensures easy ordering and prompt delivery for our customers. When you call Fernco you'll be assisted by a trained professional who knows the industry and understands your needs. Plus, your order will be quickly programmed into our data processing system for accurate recording of specifications and costs.

Only Fernco offers you the industry's largest product line, highest fill rate, and the most complete merchandising program. All of which is supported by over four decades of design, manufacturing and distribution experience combined with an ongoing commitment to product innovation.

United States
810-503-9000
 FX: 810-503-1015

Canada
519-332-6711
 FX: 519-332-8610

We support recycling. 

Page Index

HOT PRODUCTS

Pow-R Repair Products	4-5
Pow-R Wrap Industrial Size	6-7
QwikSeal	8-9
StormDrain Plus	10-11
Wax Free Toilet Seal	12
Wax Free Urinal Seal	13

SHIELDED COUPLINGS

Proflex Couplings	14-15
Strong Back RC Couplings	16-18
5000 Series RC Couplings	19-20
Stainless Steel Band Clamps	21
Stainless Steel Shear Rings	21
No-Hub Couplings	22-23

FLEXIBLE COUPLINGS

Flexible Couplings	24-25
Coupling Sizing Charts	26-28
Flexible Couplings	
Part Number Chart	29
Plastic Socket Couplings	30
Ultra-Rib™ Pipe Couplings	30
Corrugated Pipe Couplings	30
1070 & 1071 HTRC Series	
Corrugated Pipe Couplings	31
Western Series	
Center Stop Couplings	32
Eccentric Couplings	33
Qwik Tees & Qwik Ells	34
Expansion Joints	35
Pipe Sleeve Seals	35
Flexible Tap Saddles	36
Tap Saddle Pressure Kit	37

DONUTS / O-RINGS

Concrete Manhole Adapters	38
Large Diameter Waterstops	38
Donuts	39
Multi-Tite Pipe Gaskets	40
O-Rings	40

RESIDENTIAL

Qwik Caps	41
Hose Bibbs	41
Water Well Debris Traps	41
Flexible Qwik Traps	42
Drain & Trap Connectors	42
Tubular Drain Pipe Connector	43
Dishwasher Drain Connector	43
Shower Drain Connectors	44
Fix-A-Flange	44
Utility Connectors	45
Hose Grip Washer Connector	45
Downspout Connectors	46
Universal Downspout Conn.	46
Sump Pump Check Valve	47
Torque Wrenches	47

SALES REPS / CHARTS

Plumbing Market Reps	48-49
Waterworks Market Reps	50-51
Standard Pipe Sizes	52-53
Acid Resistance	54
Terms & Limited Warranty	55





Pow-R Repair Products

HOT PRODUCTS



Fernco Pow-R Repair Products are a growing family of products that will prove themselves in the field and earn their place in your toolbox. These products allow you to make fast, permanent repairs when time is not on your side and are an ideal solution for those after-hours emergency calls. You can get your customer's plumbing back up and running in minutes, instead of hours. Most repairs can be made in 15 minutes. *Ideal when your situation isn't.*



Multi-Surface 15MINUTE Repair Kit



Pow-R Patch is a complete repair kit that includes a pre-coated fiberglass cloth in self-contained mixing pouch, one pair of protective gloves and installation instructions. Each simple-to-use kit will set on dry surfaces, and will adhere to PVC, metal, wood, fiberglass, plastic and MORE! Perfect for flat and round surface repairs.

Pow-R Patch

- Unique self-contained mixing pouch
- Holds up to 100 PSI
- Heat resistant to 425° F
- Excellent adhesion to most materials

Part No.	Description
FP-P46	Pow-R Patch - 4" x 6" fiberglass and epoxy patch



Universal PLUMBING, PIPE & HOSE Repair Kit

Ideal When Your Situation Isn't

Pow-R Pack is the ultimate in emergency repair kits. Containing Fernco's Pow-R Wrap, Pow-R Patch and Pow-R Stick in one Pow-R Pack, you will be ready for any leak that comes your way. You'll have the "Pow-R" to make a large variety of repairs all in one convenient, easy to carry pack.

Pow-R Pack Includes

- (1) Pow-R Wrap - 2" x 48"
- (1) Pow-R Patch - 4" x 6"
- (1) Pow-R Stick Epoxy Putty - 2 oz
- (2) Pair of protective gloves
- Complete installation instructions



Part No.	Description
FP-FM3P1	Pow-R Pack - Contains Pow-R Wrap, Pow-R Patch and Pow-R Stick





PIPE REPAIR

Water Activated Fiberglass Wrap

If You Can WRAP IT...You Can REPAIR IT!



HOT PRODUCTS

Pow-R Wrap is a strong, permanent and economical repair. Works on virtually every kind of pipe and hose. It's an easy alternative to traditional methods such as cementing, soldering, welding, sleeving and replacement. It works on wet or dry pipes and even under water...salt or fresh.

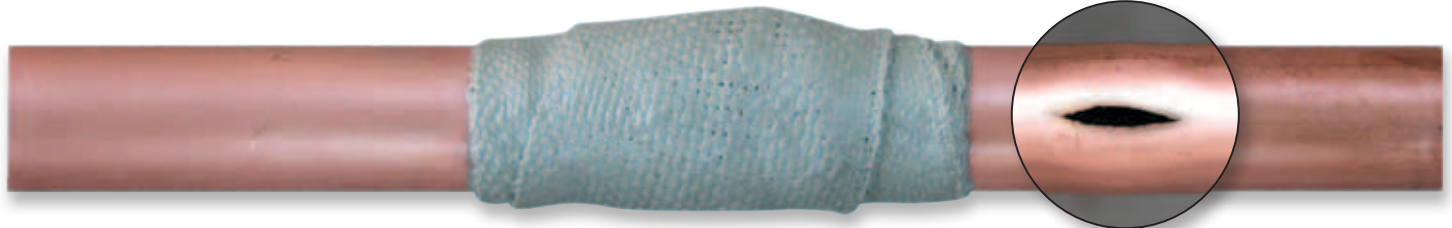
Pow-R Wrap is a complete, self contained kit that includes a resin impregnated fiberglass tape in a foil bag, Pow-R Stick epoxy putty to enhance repairs, one pair of protective gloves and installation instructions. Three convenient sizes to choose from.

Pow-R Wrap

- Water activated fiberglass wrap
- Heat resistant to 425° F
- Conforms to a standard water main pressure test
- Safe for drinking water system repairs



Part No.	Description
FPW248CS	Pow-R Wrap - 2" x 48" to repair up to 1" diameter pipe
FPW3132CS	Pow-R Wrap - 3" x 132" to repair from 1/4" to 3" dia. pipe
FPW4252CS	Pow-R Wrap - 4" x 252" to repair from 3" to 6" dia. pipe



SCAN TO WATCH VIDEO

United States
 PH: 810-503-9000
 FX: 810-503-1015



www.fernco.com

Canada
 PH: 519-332-6711
 FX: 519-332-8610



NOW with Pow-R Belt

Fast emergency repairs for 8"-50" pipe.

- **Your Fast Repair Solution**

Pow-R Wrap cures in 60-90 minutes*

- **Easier Installation**

Pow-R Belt now allows for a hands-free cure time

- **Professional Results**

Pow-R Belt creates a smooth, tight finish every time

- **Strong, Cost Effective Repairs**

Pow-R Wrap is impervious to water, oil, chemicals, solvents and acids and conforms to a standard water main pressure test



Tested on steel and ductile iron pipe with a 4" fracture at 600 psi, resulting in no leaks. Pressure results will vary depending on pipe material, size of fracture and workmanship. For plastic pressure lines, use twice the number of recommended layers of wrap. Wrap should extend a minimum of 8" each side of the break with 10-12 layers of wrap over the break.

Ideal for Municipalities, Industrial Parks,
Marine, Water/Sewer Plants, Pump Stations,
and even Chemical/Petroleum Plants

Fast • Easy • Permanent • Reduces Down Time • Saves Money



Easy Installation



Secured with Pow-R Belt



Hands-Free Cure Time



Professional Results

*55° - 75° F ideal installation temp. Higher or lower temps will influence cure time.



One SKU for Simplified Ordering

Fernco has simplified the process of selecting the right size Pow-R Wrap kit for your repair needs. With only one SKU in your inventory, and one to five kits on hand, you can make repairs on 8" to 50" outside diameter pipes. Repair cracks up to a 4" fracture.

*Put multiple kits in your truck today
and be ready for any size repair.*

Part #	FPW8540S-1 1 KIT 8" x 540" Pow-R Wrap				
PIPE OUTSIDE DIAMETER	8" - 18"	20" - 24"	26" - 34"	36" - 42"	44" - 50"
Number of Kits REQUIRED for Pipe Size	1 KIT	2 KITS	3 KITS	4 KITS	5 KITS

Larger pipes require multiple kits to achieve the minimum number of layers of Pow-R Wrap for a proper repair.



One of the sub-contractors hit the new 12" main water line for the new county building. They left a 10"X12" scratch about 2/3 into the thickness of the pipe, but did not actually pierce it.

We were adamant that we would not accept a brand new line with any of the traditional repair methods. Bands break and sleeving would have compromised the new pipe in multiple locations.

Pow-R-Wrap was the perfect solution and my staff did a magnificent job of applying the wrap (their first time too). We applied two wraps to get the recommended 8 layers, it set up beautifully. All of the on-site contractors were amazed at how easy and cost effective it was. The contractor even made the comment that we saved them easily over \$2,000.

Thank you Fernco!
Utilities Maintenance
Supervisor





If you can core through it, QwikSeal can connect to it.

QwikSeal allows you to connect service pipe to solid wall, profile, closed profile and corrugated pipe.



Corrugated



SDR-35



Clay



**Core through it.
Connect to it.**

Fernco QwikSeal

Part No.	Pipe Inlet	Pipe Size Application
QS-4	4" SDR-35	8" diameter and larger pipe
QS-4S40	4" SCH-40	8" diameter and larger pipe
QS-6	6" SDR-35	10" diameter and larger pipe
QS-6S40	6" SCH-40	10" diameter and larger pipe
QS-8	8" SDR-35	15" diameter and larger pipe

OTHERS

QwikSeal Advantages

Meets ASTM C 923	✓
When tested in Concrete Manholes:	✓
- Creates compression seal that is water tight up to 10 psi	✓
- Can handle up to 7 degrees of deflection	✓
Easy identification - Grey = Sch 40, Green = SDR-35	✓
Not dependant on the host pipe size, type or material	✓
Reduced complexity: 1 QwikSeal = Many Solutions	✓
Less inventory = More turns	✓

Fernco Hole Saws

Part No.	Description
QS-5x6HS	5" OD x 6" Deep Hole Saw with Arbor
QS-7x6HS	7" OD x 6" Deep Hole Saw with Arbor
QS-9x6HS	9" OD x 6" Deep Hole Saw with Arbor
QS-SAW5	5" OD x 6" Deep - HOLE SAW ONLY
QS-SAW7	7" OD x 6" Deep - HOLE SAW ONLY
QS-SAW9	9" OD x 6" Deep - HOLE SAW ONLY
QS-ARBOR	3/8" x 12" Drill with 1/2" Arbor
QS-ADAPTER	1 1/4" x 3/4" Coring Machine Adapter

Fernco Coring Bits

Part No.	Description
QS-5x14CB	5" OD x 14" Length Abrasive Coring Bit
QS-7x14CB	7" OD x 14" Length Abrasive Coring Bit
QS-9x14CB	9" OD x 14" Length Abrasive Coring Bit

Installation Instructions



1.

Core a perpendicular hole to the main line:
 - 5" hole for 4" pipe inlet
 - 7" hole for 6" pipe inlet
 - 9" hole for 8" pipe inlet



2.

Using sand paper or a file, clean and remove any burrs from opening.



3.

Remove band clamp from QwikSeal, fold and insert into opening. Unfold.



4.

Pull up on QwikSeal until it stops against the inside of the pipe.



5.

Measure the depth of the QwikSeal, from the pipe stop to the top edge.



6.

Measure the depth of the fitting to be attached to the pipe stub.

See alternative method below.



7.

Add the dimensions of the QwikSeal and the fitting and cut a stub to that length.



8.

Bevel the leading edge of the pipe stub for easier insertion into the QwikSeal.



9.

Lubricate the QwikSeal and pipe stub.



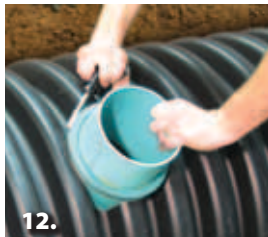
10.

Start the pipe stub into the QwikSeal by hand.



11.

Using a hammer and block of wood, drive the pipe stub to the QwikSeal pipe stop.



12.

Install the band clamp at 60 in-lbs torque.



13.

Install pipe fitting. Fitting should sit flush with the surface of the QwikSeal.



Fitting and QwikSeal should be flush.

Alternative methods to stub and fitting:

Bell End Pipe: You may also use the bell end of a piece of SDR-35 or SCH-40 instead of the stub and fitting method. After measuring the depth of the QwikSeal in step 5, transfer this measurement to the bell end of your inlet pipe, measuring from the bell. (Figure A) Proceed with steps 8 - 12.

Street Fittings: Street fittings may also be used with QwikSeal. (Figure B)



A.



B.

Connect lateral pipe and check for leaks prior to backfilling.



39.5" Channel
FSDP-CHGG



Quad
FSDP-QUAD



Contractor Pack
FSDP-GP3G

NEW & IMPROVED design for a stronger and easier drainage solution!

The durability & high performance of the Fernco StormDrain **Plus** ensures a long lasting, permanent solution to the collection and dispersal of standing surface water. The easy installation is ideal for driveways, pools, patios, walkways, sports courts and more.

- All products are "UV" inhibited
- Grates are ADA and heel guard compliant
- Grates have non-slip textured surface
- 3 bottom outlets in every channel
- No clips or screws required to assemble



APPLICATIONS

Driveways - Position between the garage and the driveway

Patios - Drain water away from where it may be pooling

Swimming pools - Divert pool water away from grass or flower beds

Sports Courts - Where standing water could prove to be a hazard

Gardens - Where natural run off can be safely diverted

Walkways - Drains pooling water safely and conveniently

Part No.	Description
FSDP-CHGG	39.5" StormDrain Plus grey Channel with grate
FSDP-GP3G	StormDrain Plus Contractor Pack: 3 pieces of grey Channel with grate, 1 End Cap & 1 End Outlet
FSDP-QUAD	StormDrain Plus Quad - 4-way connector
FSDP-EC	StormDrain Plus End Cap
FSDP-EO	StormDrain Plus End Outlet

Replacement Parts

FSDP-CH	StormDrain Plus grey Channel ONLY
FSDP-GG	StormDrain Plus grey grate ONLY



Strength By Design

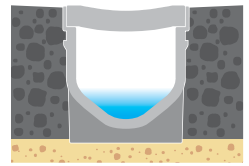
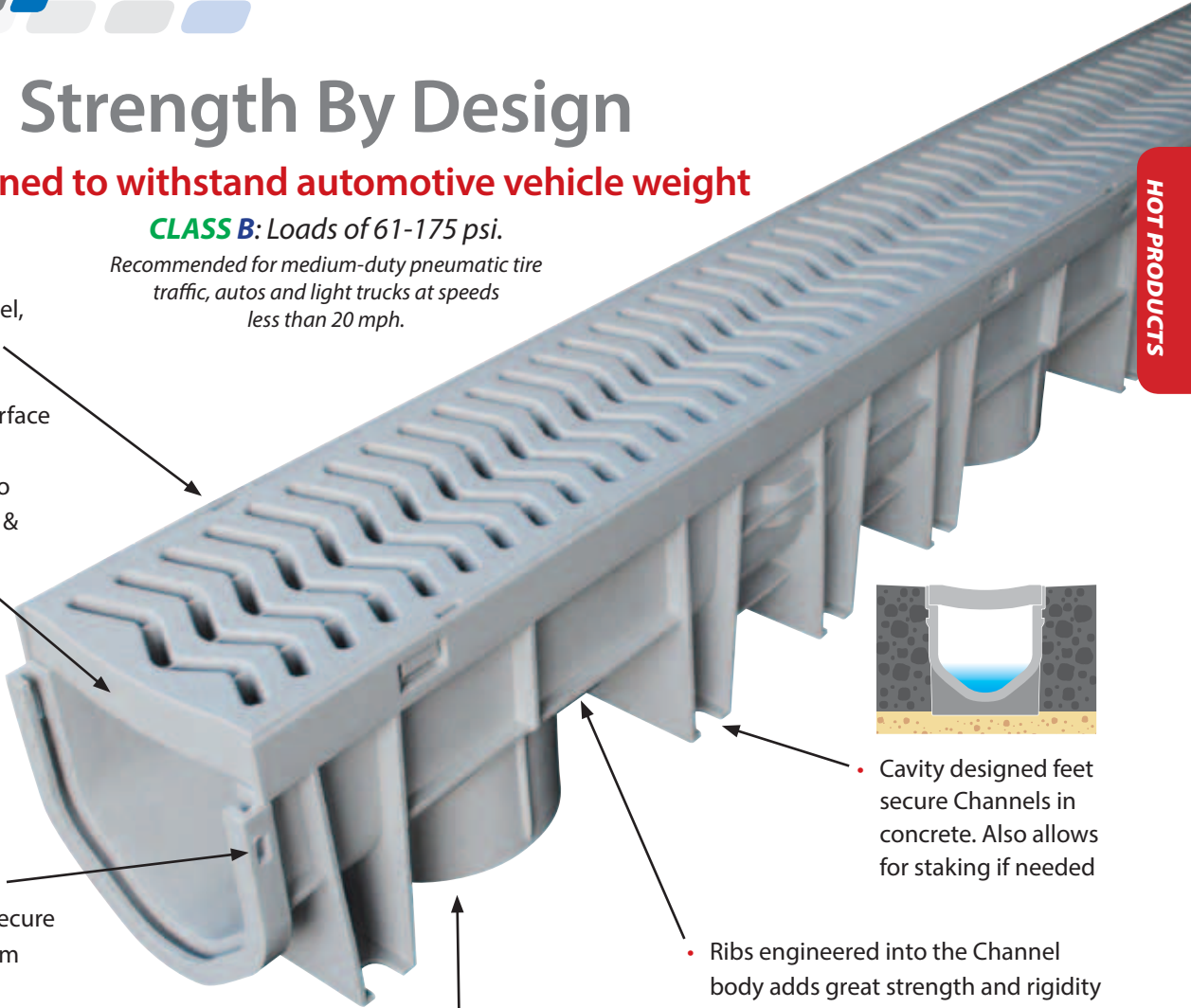
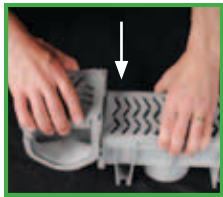
Designed to withstand automotive vehicle weight

CLASS B: Loads of 61-175 psi.

Recommended for medium-duty pneumatic tire traffic, autos and light trucks at speeds less than 20 mph.

HOT PRODUCTS

- Grates lock in Channel, no screws required
- Textured non-slip surface
- Grates are concave to more efficiently trap & transfer water



- Channel lengths are interlocking with a secure built-in joining system

- Cavity designed feet secure Channels in concrete. Also allows for staking if needed

- Ribs engineered into the Channel body adds great strength and rigidity

Quad - FSDP-QUAD



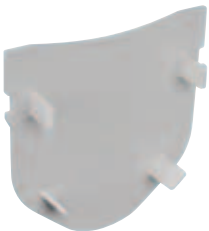
3 bottom outlets in every Channel

- The bottom outlets can be cut out with a hole saw or utility knife and accommodates 3" and 4" Sch. 40, 3" SDR-35 hub, 4" SDR-35 pipe, 3" corrugated and 4" triple wall.

The Quad allows left or right hand extension of the StormDrain **Plus** or even T and X configurations. The required openings are easily cut out.



End Cap - FSDP-EC



End Caps slide into StormDrain **Plus** Channel

End Outlet - FSDP-EO



End Outlet accommodates 3" & 4" Sch. 40 pipe, 3" Sch. 40 hub, 3" & 4" corrugated, 4" triple wall, 3" & 4" SDR-35 pipe and hub

Simple accessory attachment

- The StormDrain **Plus** Quad, End Cap and End Outlet just slide into the female end of the Channel. They also each have tabs to fit into the male end of the Channel or the cut to length end of the Channel.

No clips or screws required to assemble



Wax Free Toilet Seal

The quick, clean and easy way to install a toilet.

Not only is it quick, clean and easy, but it is the only toilet seal that lets you *"feel the seal."* As you lower the toilet onto the flange you can feel the unique sealing rings of the Wax Free Toilet Seal compress and seal against the inside walls of the drain pipe. NO mess. NO guess. Just confidence in a reliable seal. After all, it's made by Fernco.



Peel

Stick

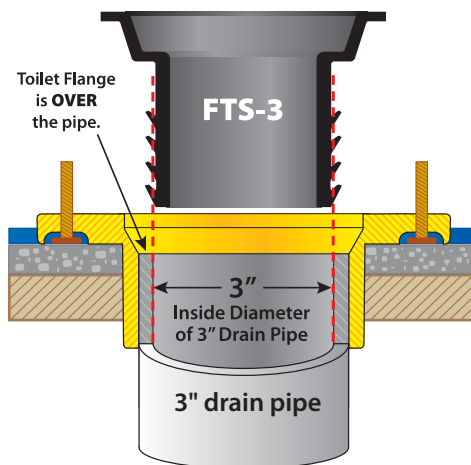
Install

FTS BENEFITS AND FEATURES

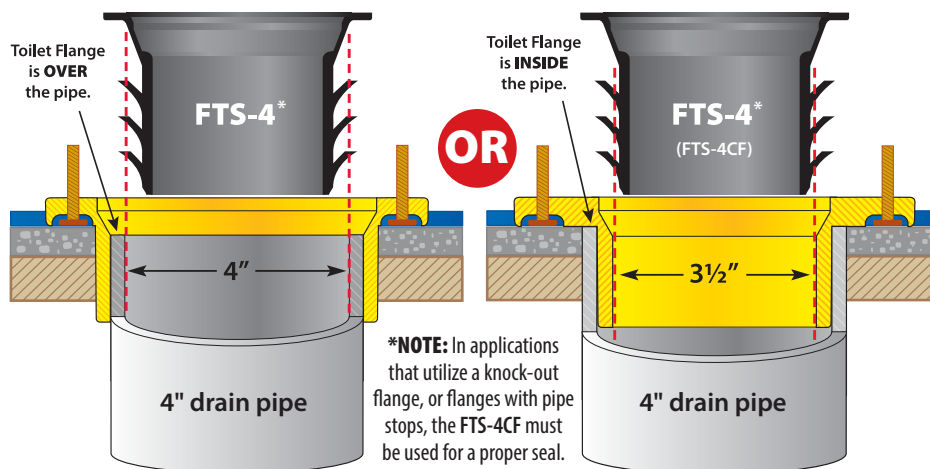
- **CONFORMS TO ASTM A 1045**
- Strong, flexible adhesive creates a positive seal to the bottom of the toilet
- Flexible ribs form a tight, positive seal to the inside of the drain pipe
- Seals on floors raised above the flange by up to 3/4"
- No need for flange risers or stacked wax rings
- Ideal for in-floor radiant heat installations
- Impervious to mold and mildew
- Centers itself and the toilet to the drain
- Toilet can be removed and reinstalled with the same Fernco Wax Free Toilet Seal still attached
- Made of flexible PVC with excellent chemical resistance



The FTS-3 Wax Free Toilet Seal



The FTS-4 Wax Free Toilet Seal



***NOTE:** In applications that utilize a knock-out flange, or flanges with pipe stops, the FTS-4CF must be used for a proper seal.

FTS-4 Is also Ideal for most 4" Closet Wall Carriers



TOILET HORN MUST BE CLEAN BEFORE INSTALLATION

1. Remove old wax with a putty knife
2. Clean away any remaining wax
3. Use Rubbing Alcohol on a towel or rag to remove any remaining wax
4. Dry surface completely before installing the Wax Free Toilet Seal

United States

PH: 810-503-9000
FX: 810-503-1015



www.fernco.com

Canada

PH: 519-332-6711
FX: 519-332-8610

Wax Free Urinal Seal

Leak-Free, Hassle-Free, Worry-Free



ASTM A 1045



FUS BENEFITS & FEATURES

- Fast, easy installation that provides a long term solution - even **reusable on the same urinal** during service calls
- Strong, flexible adhesive creates a positive seal with the urinal
- Engineered to seal to the inside diameter of the drain pipe forming a water tight, gas tight and odor tight seal
- Made of flexible PVC and will flex with minor movement
- Will not absorb moisture or break down over time and is impervious to mold and mildew
- **Ideal for new installations and replacements**

Replace the failed foam seal **every time...**



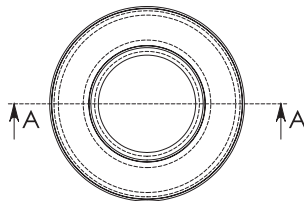
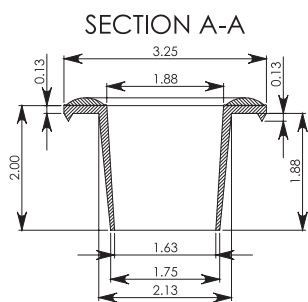
...or install a Wax Free Urinal Seal **the first time!**



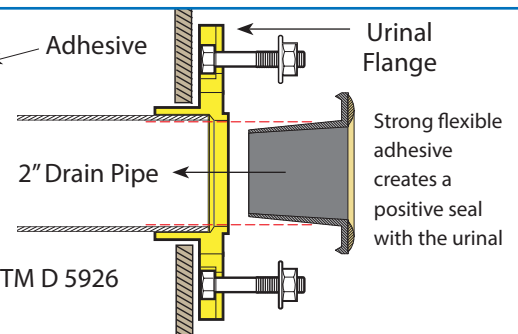
SCAN TO WATCH VIDEO

Part No.	Description
FUS-2	Wax Free Urinal Seal for 2" drain pipe

DIMENSIONS



- Gasket Material: Plasticized PVC 75 Conforming to ASTM D 5926
- Adhesive: Permanent Pressure Sensitive Adhesive



U.S. Patent Numbers: D655,796S; D655,795S; D655,400S; D649,625S



Proflex Specialty Couplings

Shielded transition couplings designed for resistance to shear forces.



SHIELDED COUPLINGS

PROFLEX
Specialty Couplings By *Fernco, Inc.*

Proflex allows you to make transition pipe connections that are resistant to shear forces, while creating a rigid, long-lasting pipe joint. From 1 1/2" to 8" - PROFLEX connects cast iron, plastic, steel, copper and tubular drain waste and vent systems.



PROFLEX TECHNICAL SPECS

Proflex Shielded Couplings: ASTM C 1460 and CSA B602

Gasket Material: Neoprene - ASTM C 564

Gasket ID: Part No. and application on each gasket.

Shield Assembly Material Requirements:

All 300 Series Stainless Steel

Clamp

Band = 301 Stainless Steel .025 x .500 x Length

Housing = 301 Stainless Steel - Fernco

Screw = 305 Stainless Steel 5/16" Hex - No Slot

Shield

301 Stainless Steel .012 x 2.125 x Length

Eyelet

305 Stainless Steel

Note: Installation torque = 60 in-lbs



3000 Series Proflex-
Cast Iron to Plastic, Steel or Extra-Heavy Cast Iron

Part No.	Description	Mission
3000-150	1-1/2" CI, PL or ST to 1-1/2" CI, PL, ST	CP-150
3000-215	2" CI, PL or ST to 1-1/2" CI, PL, ST	CP-215
3000-22	2" CI, PL or ST to 2" CI, PL, ST	CP-200
3000-33	3" CI, to 3" PL, ST or XH CI	CP-33
3000-43	4" CI, to 3" PL, ST or XH CI	CP-43
3000-44	4" CI, to 4" PL, ST or XH CI	CP-44
3000-55	5" CI, to 5" PL, ST or XH CI	CP-55
3000-66	6" CI, to 6" PL, ST or XH CI	CP-66
3000-88	8" CI, to 8" PL, ST or XH CI	CP-88

United States

PH: 810-503-9000

FX: 810-503-1015



www.fernco.com

Canada

PH: 519-332-6711

FX: 519-332-8610

Proflex Specialty Couplings - Shielded transition couplings.



3001 Series Proflex- Cast Iron to Copper

Part No.	Description	Mission
3001-110	1-1/2" CI, PL or ST to 1" Copper or 3/4" PL	CK-110
3001-1125	1-1/2" CI, PL or ST to 1-1/4" Copper or 1" PL	CK-1125
3001-150	1-1/2" CI, PL or ST to 1-1/2" Copper or 1-1/4" PL	CK-115
3001-2125	2" CI, PL or ST to 1 1/4" Copper or 1" PL	CK-2125
3001-215	2" CI, PL or ST to 1-1/2" Copper or 1-1/4" PL	CK-215
3001-22	2" CI, PL or ST to 2" Copper	CK-22
3001-315	3" CI to 1-1/2" Copper or 1-1/4" PL	CK-315
3001-32	3" CI to 2" Copper	CK-32
3001-33	3" CI to 3" Copper	CK-33
3001-43	4" CI to 3" Copper	CK-43
3001-44	4" CI to 4" Copper	CK-44



3002 Series Proflex- Cast Iron, Plastic or Steel to Tubular

Part No.	Description	Mission
3002-150	1-1/2" CI, PL or ST to 1-1/2" Tubular	T-150
3002-155	1-1/2" Tubular to 1-1/2" Tubular	BWT-150
3002-215	2" CI, PL or ST to 1-1/2" Tubular	T-215



3003 Series Proflex- Copper to Copper

Part No.	Description	Mission
3003-150	1-1/2" Copper to 1-1/2" Copper or 1-1/4" PL	K-150
3003-215	2" Copper to 1-1/2" Copper or 1-1/4" PL	K-215
3003-22	2" Copper to 2" Copper	K-200
3003-33	3" Copper to 3" Copper	K-300



3004 Series Proflex- Cast Iron to Cast Iron, Plastic or Steel

Part No.	Description	Mission
3004-320	3" CI, to 2" CI, PL, or ST	C-320
3004-420	4" CI, to 2" CI, PL, or ST	C-420
3004-430	4" CI, to 3" CI	C-430
3004-540	5" CI, to 4" CI	C-540



3005 Series Proflex- Plastic, Steel, or XHCI to Plastic Steel or XHCI

Part No.	Description	Mission
3005-33	3" PL, ST, or XH CI, to 3" PL, ST, or XH CI	P-300
3005-43	4" PL, ST, or XH CI, to 3" PL, ST, or XH CI	P-430
3005-44	4" PL, ST, or XH CI, to 4" PL, ST, or XH CI	P-400
3005-66	6" PL, ST, or XH CI, to 6" PL, ST, or XH CI	P-600



3006 Series Proflex- Copper to Cast Iron, Plastic or Steel

Part No.	Description	Mission
3006-215	2" Copper to 1-1/2" CI, PL, or ST	KC-215
3006-32	3" Copper to 2" CI, PL, or ST	KC-32
3006-43	4" Copper to 3" CI	KC-43



3007 Series Proflex- Plastic, Steel, or Extra-Heavy Cast Iron to Copper

Part No.	Description	Mission
3007-32	3" PL, ST or XH CI to 2" Copper	PK-32
3007-33	3" PL, ST or XH CI to 3" Copper	PK-33
3007-43	4" PL, ST or XH CI to 3" Copper	PK-43
3007-44	4" PL, ST or XH CI to 4" Copper	PK-44



3008 Series Proflex- Plastic, Steel, or XHCI to Cast Iron, Plastic or Steel

Part No.	Description	Mission
3008-32	3" PL, ST, or XH CI, to 2" CI PL, or ST,	PC-32



3009 Series Proflex- Thin Wall Plastic to Sch. 40 Plastic

Part No.	Description	Mission
3009-33	3" Thinwall Plastic to 3" Sch. 40 Plastic.	TWP-33
3009-44	4" Thinwall Plastic to 4" Sch. 40 Plastic	TWP-44



3010 Series Proflex- Copper to Tubular

Part No.	Description	Mission
3010-150	1-1/2" Copper to 1-1/2" Tubular	KT-150
3010-215	2" Copper to 1-1/2" Tubular	KT-215

Strong Back RC Series Repair Couplings

Designed for resistance to heavy earth loads and shear forces and provides improved pipe alignment.

Strong Back RC Couplings include a .012" stainless steel shield and a molded in bushing.



TECHNICAL SPECS & CODE APPROVALS

Gasket

- Manufactured to meet the material requirements of:
 - CSA B602 - mechanical couplings for drain, waste, vent pipe and sewer pipe
 - ASTM D 5926 - Standard Specification for Poly Vinyl Chloride (PVC) Gaskets for Drain, Waste, and Vent (DWV), Sewer, Sanitary, and Storm Plumbing Systems
 - ASTM C 1173 - Standard Specification for Flexible Transition Couplings for Underground Piping Systems
- Hardness, Shore "A", Inst. +5.....65
- Tensile Strength, Min. psi1000
- Elongation at Rupture, Min. %.....250
- Tear Strength, Min.....150 lb/in.
- Brittleness Temperature.....-40°F

Clamps

- Clamp Housing- 301 Stainless Steel
- Clamp Band - 301 Stainless Steel
- Clamp Screw - 305 Stainless Steel
- Installation torque 60 in-lbs

Shear Ring

- .012" Thick, 300 Series Stainless Steel
- Width manufactured according to coupling width (1.50", 2", or 4")
- Length manufactured according to coupling diameter
- Clamps spot welded in place

Coupling

- Manufactured to conform to the performance requirements of:
 - ASTM C 1173 - standard specification for flexible transition couplings for underground piping systems



Part numbers on the next page...



This product can be custom ordered for ANY common sewer pipe size and material combination.

Strong Back RC Couplings - RC Series Repair Couplings



1001 RC Series - Clay to Clay

Part No.	A		B		C	
	in.	mm	in.	mm	in.	mm
1001-44RC	5.29	134	5.29	134	4.10	104
1001-44WCRC	5.51	140	5.51	140	3.97	101
1001-64RC	7.50	191	5.50	140	6.02	153
1001-66RC	7.50	191	7.50	191	6.02	153
1001-66WCRC	8.00	203	8.00	203	6.00	152
1001-88RC	9.65	245	9.65	245	5.99	152
1001-88WCRC	10.00	254	10.00	254	6.00	152
1001-1010RC	12.40	315	12.40	315	5.90	150
1001-1010WCRC	12.40	315	12.40	315	5.90	150
1001-1212RC	14.51	369	14.51	369	6.38	162
1001-1212WCRC	15.25	387	15.25	387	6.42	163
1001-1515RC	18.14	461	18.14	461	9.89	251
1001-1818RC	21.90	556	21.90	556	9.63	245
1001-2424RC	28.97	736	28.97	736	9.89	251



1002 RC Series - Clay to Cast Iron or Plastic

Part No.	A		B		C	
	in.	mm	in.	mm	in.	mm
1002-43RC	5.29	134	3.38	86	4.10	104
1002-44RC*	5.36	136	4.51	115	4.07	103
1002-44WCRC*	5.44	138	4.55	116	3.96	101
1002-46RC	5.13	130	6.60	168	5.74	146
1002-55RC	6.60	168	5.50	140	5.74	146
1002-64RC	7.50	191	4.50	114	6.02	153
1002-64WCRC*	8.00	203	4.50	116	6.00	152
1002-64WCRC-SDR	8.00	203	4.38	111	6.00	152
1002-66RC*	7.50	191	6.56	167	5.89	150
1002-66WCRC*	8.04	204	6.38	162	5.91	150
1002-88RC*	9.76	248	8.57	218	5.96	151
1002-88WCRC*	10.00	254	8.66	220	6.00	152
1002-1010RC	12.40	315	10.75	273	5.90	150
1002-1010WCRC	12.40	315	10.75	273	5.90	150
1002-1210RC	14.51	369	10.60	269	6.00	152
1002-1212RC	14.51	369	12.60	320	6.38	162
1002-1212WCRC	15.25	387	12.60	320	6.42	163
1002-1215RC	14.38	365	15.25	387	6.42	163
1002-1515RC	18.14	461	15.40	391	9.89	251
1002-1818RC	21.90	556	19.00	483	9.63	245
1002-2121RC	25.46	647	22.30	566	9.89	251
1002-2424RC	28.97	736	25.00	635	9.89	251



1003 RC Series - Clay to Asbestos Cement Fibre (AC) or Ductile Iron

Part No.	A		B		C	
	in.	mm	in.	mm	in.	mm
1003-44RC*	5.41	137	4.94	125	4.07	103
1003-66RC*	7.25	184	6.84	174	5.93	151
1003-66WCRC	8.00	203	6.80	173	6.00	152
1003-68RC	7.20	183	9.05	230	5.98	152
1003-8-10RC	9.65	245	11.22	285	5.97	152
1003-88RC*	9.75	248	9.06	230	5.94	151
1003-1010RC	12.40	315	11.12	282	5.90	150
1003-1212RC	14.51	369	13.20	335	6.38	162
1003-1818RC	21.90	556	19.50	495	9.63	245



1004 RC Series - Concrete to Concrete

Part No.	A		B		C	
	in.	mm	in.	mm	in.	mm
1004-44RC	5.51	140	5.51	140	3.97	101
1004-66RC	7.58	193	7.58	193	5.94	151
1004-88RC	10.38	264	10.38	264	5.90	150
1004-1010RC	12.40	315	12.40	315	5.90	150
1004-1212RC	15.25	387	15.25	387	6.42	163
1004-1515RC	19.74	501	19.74	501	9.89	251



1006 RC Series - Concrete to Cast Iron or Plastic

Part No.	A		B		C	
	in.	mm	in.	mm	in.	mm
1006-44RC*	5.64	143	4.51	115	3.97	101
1006-64RC	7.58	193	4.38	111	5.94	151
1006-66RC*	7.63	194	6.63	168	5.94	151
1006-86RC	10.38	264	6.38	162	5.90	150
1006-88RC*	10.49	266	8.63	219	5.90	150
1006-1010RC	12.40	315	10.75	273	5.90	150
1006-1212RC	15.25	387	12.60	320	6.42	163
1006-1515RC	19.74	501	15.40	391	9.89	251

*Designated part numbers come with an insert bushing.

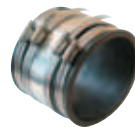


Strong Back RC Couplings - RC Series Repair Couplings



1051 RC Series - Asbestos Cement Fibre (AC) or Ductile Iron to Cast Iron or Plastic

Part No.	A		B		C	
	in.	mm	in.	mm	in.	mm
1051-44RC*	4.80	122	4.39	112	3.94	100
1051-45RC	5.00	127	5.52	140	3.97	101
1051-46RC*	4.75	121	6.60	168	5.74	146
1051-55RC	5.90	150	5.50	140	5.92	150
1051-64RC	6.95	177	4.38	111	5.92	150
1051-65RC	6.95	177	5.50	140	5.92	150
1051-66RC*	6.69	177	6.69	170	5.91	150
1051-8-10RC	9.05	230	10.63	270	5.89	150
1051-88RC*	9.25	235	8.51	216	5.97	152
1051-10-8RC	11.02	280	8.38	213	5.97	152
1051-1212RC	13.37	340	12.60	320	5.97	152
1051-1818RC	19.74	501	19.74	501	9.89	251



1056 RC Series - CI, PL, Copper, ST or Lead to CI, PL, Copper, ST or Lead

Part No.	A		B		C	
	in.	mm	in.	mm	in.	mm
1056-150RC	1.94	49	1.94	49	3.43	87
1056-22RC	2.41	61	2.41	61	3.45	88
1056-32RC	3.52	89	2.38	60	3.96	101
1056-33RC	3.46	88	3.46	88	3.98	101
1056-43RC	4.58	116	3.38	86	4.02	102
1056-44RC	4.58	116	4.58	116	4.02	102
1056-54RC	5.52	140	4.38	111	3.97	101
1056-55RC	5.52	140	5.52	140	3.97	101
1056-64RC*	6.60	168	4.50	114	5.74	146
1056-65RC	6.60	168	5.62	143	5.74	146
1056-66RC	6.60	168	6.60	168	5.74	146
1056-86RC	8.64	219	6.63	162	6.04	153
1056-88RC	8.64	219	8.64	219	6.04	153
1056-1010RC	10.63	270	10.63	270	5.89	150
1056-1212RC	12.52	318	12.52	318	6.32	161
1056-1515RC	15.92	404	15.92	404	9.89	251
1056-1818RC	19.10	485	19.10	485	9.89	251



1055 RC Series - AC or Ductile Iron to AC or Ductile Iron

Part No.	A		B		C	
	in.	mm	in.	mm	in.	mm
1055-44RC	4.75	121	4.75	121	3.96	101
1055-66RC	6.65	169	6.65	169	5.92	150
1055-88RC	9.05	230	9.05	230	5.98	152
1055-1010RC	11.22	285	11.22	285	5.97	152
1055-1212RC	13.37	340	13.37	340	5.97	152



This product can be custom ordered for ANY common sewer pipe size and material combination.

*Designated part numbers come with an insert bushing.



5000 Series Strong Back (RC) Couplings

Designed for resistance to heavy earth loads and shear forces, while providing improved pipe alignment.



5000 SERIES TECHNICAL SPECS

Gasket

- Manufactured to meet the material requirements of:
 - CSA B602 - mechanical couplings for drain, waste, vent pipe and sewer pipe
 - ASTM D 5926 - Standard Specification for Poly Vinyl Chloride (PVC) Gaskets for Drain, Waste, and Vent (DWV), Sewer, Sanitary, and Storm Plumbing Systems
 - ASTM C 1173 - Standard Specification for Flexible Transition Couplings for Underground Piping Systems
- Hardness, Shore "A", Inst. +5.....65
- Tensile Strength, Min. psi1000
- Elongation at Rupture, Min. %.....250
- Tear Strength, Min.....150 lb/in.
- Brittleness Temperature.....-40°F

Clamps

- Clamp Band - 316 Stainless Steel
- 6" and larger couplings incorporate two nut and bolt take-up points per band
- Installation torque 60 in-lbs

Shear Ring

- .012" Thick, 300 Series Stainless Steel
- Width manufactured according to coupling width (1.50", 2.13", or 4")
- Length manufactured according to coupling diameter
- Clamps spot welded in place

Coupling

- Manufactured to conform to the performance requirements of:
 - ASTM C 1173 - standard specification for flexible transition couplings for underground piping systems



Nut and Bolt Clamps



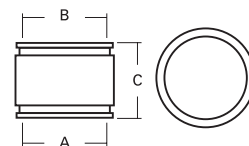
Molded-in Bushings



.012" Stainless Steel Shield



Resistance to Heavy Earth Loads



SHIELDED COUPLINGS

5001 RC Series - Clay to Clay

Fernco Part No.	Mission Part No.	A		B		C	
		in.	mm	in.	mm	in.	mm
5001-44RC	MR01 44 ARC	5.29	134	5.29	134	4.10	104
5001-44WCRC	MR01 44 ARC	5.51	140	5.51	140	3.97	101
5001-66RC	N/A	7.50	191	7.50	191	6.02	153
5001-66WCRC	MR01 66 ARC	8.01	203	8.01	203	6.00	152
5001-88RC	MR01 88 ARC	9.65	245	9.65	245	5.99	152
5001-88WCRC	MR01 88 ARC	10.00	254	10.00	254	6.00	152
5001-1010RC	MR01 1010 ARC	12.40	315	12.40	315	5.90	150
5001-1212RC	MR01 1212 ARC	14.51	369	14.51	369	6.38	162
5001-1515RC	MR01 1515 ARC	18.14	461	18.14	461	9.89	251
5001-1818RC	MR01 1818 ARC	21.90	556	21.90	556	9.63	245

5002 RC Series - Clay to Cast Iron or Plastic

Fernco Part No.	Mission Part No.	A		B		C	
		in.	mm	in.	mm	in.	mm
5002-43RC	MR02 43 ARC	5.29	134	3.38	86	4.10	104
5002-44RC*	MR02 44 ARC	5.36	136	4.51	115	4.07	103
5002-44WCRC*	MR02 44 ARC	5.44	138	4.55	116	3.96	101
5002-46RC	MR02 46 ARC	7.50	191	5.13	130	6.02	153
5002-55RC	MR02 55 ARC	6.60	168	5.50	140	5.74	146
5002-64RC	MR02 64 ARC	7.50	191	4.50	114	6.02	153
5002-64WCRC*	MR02 64 ARC	8.02	204	4.57	116	6.00	152
5002-66RC*	MR02 66 ARC	7.50	191	6.56	167	5.89	150
5002-66WCRC*	MR02 66 ARC	8.04	204	6.38	162	5.91	150
5002-86RC	MR02 86 ARC	9.65	245	6.63	168	6.00	152
5002-88RC*	MR02 88 ARC	9.76	248	8.57	218	5.96	151
5002-88WCRC*	MR02 88 ARC	10.00	254	8.66	220	6.00	152
5002-1010RC	MR02 1010 ARC	12.40	315	10.75	273	5.90	150
5002-1212RC	MR02 1212 ARC	14.51	369	12.60	320	6.38	162
5002-1515RC	MR02 1515 ARC	18.14	461	15.40	391	9.89	251
5002-1818RC	MR02 1818 ARC	21.90	556	19.00	483	9.63	245

5003 RC Series - Clay to Asbestos Cement Fibre or Ductile Iron

Fernco Part No.	Mission Part No.	A		B		C	
		in.	mm	in.	mm	in.	mm
5003-44RC*	MR03 44 ARC	5.41	137	4.94	125	4.07	103
5003-66RC*	MR03 66 ARC	7.25	184	6.84	174	5.93	151
5003-88RC*	MR03 88 ARC	9.75	248	9.06	230	5.94	151
5003-1212RC	MR03 1212 ARC	14.51	369	13.20	335	6.38	162
5003-1516RC	MR03 1516 ARC	18.10	460	18.10	460	9.89	251

5004 RC Series - Concrete to Concrete

Fernco Part No.	Mission Part No.	A		B		C	
		in.	mm	in.	mm	in.	mm
5004-44RC	MR05 44 ARC	5.51	140	5.51	140	3.97	101
5004-66RC	MR04 66 ARC	7.58	193	7.58	193	5.94	151
5004-88RC	MR04 88 ARC	10.38	264	10.38	264	5.90	150

5004-1010RC	MR04 1010 ARC	12.40	315	12.40	315	5.90	150
5004-1212RC	MR04 1212 ARC	15.25	387	15.25	387	6.42	163
5004-1212LCRC	MR04 1212 ARC	16.10	409	16.10	409	9.89	251

5006 RC Series - Concrete to Cast Iron or Plastic

Fernco Part No.	Mission Part No.	A		B		C	
		in.	mm	in.	mm	in.	mm
5006-44RC*	MR06 44 ARC	5.51	140	4.50	114	3.97	101
5006-66RC*	MR06 66 ARC	7.58	193	6.63	168	5.94	151
5006-88RC*	MR06 88 ARC	10.38	264	8.50	216	5.90	150
5006-1010RC	MR06 1010 ARC	12.40	315	10.75	273	5.90	150
5006-1212RC	MR06 1212 ARC	15.25	387	12.60	320	6.42	163
5006-1212LCRC	MR06 1212 ARC	16.10	409	12.60	320	9.89	251

5051 RC Series - AC or Ductile Iron to CI or PL

Fernco Part No.	Mission Part No.	A		B		C	
		in.	mm	in.	mm	in.	mm
5051-44RC*	MR51 44 ARC	4.80	122	4.39	112	3.94	100
5051-46RC*	N/A	6.60	168	4.75	121	5.74	146
5051-64RC	N/A	6.95	177	4.38	111	5.92	150
5051-66RC*	MR51 66 ARC	6.96	177	6.69	170	5.91	150
5051-88RC*	MR51 88 ARC	9.25	235	8.51	216	5.97	152
5051-1010RC*	MR51 1010 ARC	11.02	280	10.52	267	5.85	148
5051-1212RC	MR51 1212 ARC	13.20	335	12.60	320	5.97	152
5051-1615RC	MR51 1615 ARC	18.14	461	15.40	391	9.89	251

5055 RC Series - AC or Ductile Iron to AC or Ductile Iron

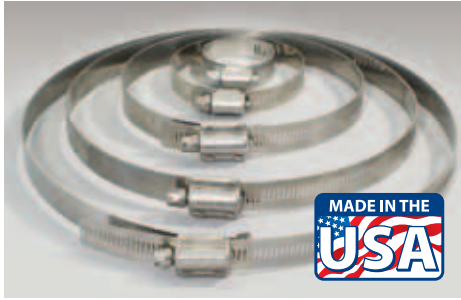
Fernco Part No.	Mission Part No.	A		B		C	
		in.	mm	in.	mm	in.	mm
5055-44RC	MR55 44 ARC	4.75	121	4.75	121	3.96	101
5055-66RC	MR55 66 ARC	6.65	169	6.65	169	5.92	150
5055-88RC	MR55 88 ARC	9.05	230	9.05	230	5.98	152

5056 RC Series - CI, PL, or Steel to CI, PL, or Steel

Fernco Part No.	Mission Part No.	A		B		C	
		in.	mm	in.	mm	in.	mm
5056-43RC	MR56 43 ARC	4.58	116	3.38	86	4.02	102
5056-44RC	MR56 44 ARC	4.58	116	4.58	116	4.02	102
5056-44XLRC	N/A		0		0		0
5056-54RC	MR56 54 ARC	5.52	140	4.38	111	3.97	101
5056-55RC	MR56 55 ARC	5.52	140	5.52	140	3.97	101
5056-64RC*	MR56 64 ARC	6.60	168	4.50	114	5.74	146
5056-66RC	MR56 66 ARC	6.60	168	6.60	168	5.74	146
5056-88RC	MR56 88 ARC	8.64	219	8.64	219	6.04	153
5056-1010RC	MR56 1010 ARC	10.63	270	10.63	270	5.89	150
5056-1212RC	MR56 1212 ARC	12.52	318	12.52	318	6.32	161
5056-1515RC	MR56 1515 ARC	15.44	392	15.44	392	9.89	251
5056-1818RC	MR56 1818 ARC	19.00	483	19.00	483	9.89	251
5056-2424RC	N/A	25.10	638	25.10	638	9.89	251



300 Series Stainless Steel Clamps



Interlocked housing and band design strengthens under tension to ensure a positive seal. Bands have additional slots to accommodate greater dimensional range.

Part No.	For Diameters	Part No.	For Diameters
012-300	9/16" to 1-1/4"	104-300	5" to 7"
024-300	1-1/16" to 2"	116-300	5-3/4" to 7-3/4"
028-300	1-5/16" to 2-1/4"	128-300	6-1/2" to 8-1/2"
032-300	1-9/16" to 2-1/2"	140-300	7" to 9-1/4"
038-300	1-15/16" to 2-7/8"	152-300	8" to 10"
042-300	2-3/16" to 3-1/8"	164-300	8-3/4" to 10-3/4"
044-300	2-5/16" to 3-1/4"	184-300	10" to 12"
064-300	2-5/8" to 4-1/2"	196-300	10-3/4" to 12-3/4"
080-300	3-5/8" to 5-1/2"	212-300	11-3/4" to 13-3/4"
088-300	4-3/32" to 6"	248-300	14" to 16"
096-300	4-1/2" to 6-1/2"		

Series 316 Stainless Steel Clamps are available upon request.

Stainless Steel Shear Rings

Add extra strength to just about any size Fernco coupling.



Available for Fernco's 1-1/2" to 15" couplings with **CUSTOM SIZES** available.

Fernco's stainless steel shear rings are easy to attach and help maintain proper alignment in even the most unstable ground conditions. Bushings are supplied separately for material transition and size reduction.

Stocked separately for convenient use with your regular inventory.

Part No.	Fits Fernco Coupling Part No.	Length	Width	Band Size
SR-9	1056-150	9"	1.5"	32
SR-11	1056-22	11"	1.5"	44
SR-15	1056-33	15"	2"	64
SR-19	1056-44, 1055-44	19"	2"	88
SR-22	1001-44, 1004-44, 1056-55	22"	2"	96
SR-25	1056-66	25"	4"	116
SR-27	1001-66, 1055-66	27"	4"	128
SR-28	1004-66	28"	4"	140
SR-33	1056-88	33"	4"	152
SR-35	1001-88, 1055-88	35"	4"	164
SR-37	1004-88	37"	4"	184
SR-39	1055-1010, 1056-1010	39"	4"	184
SR-46	1001-1010, 1004-1010, 1051-1212, 1055-1212, 1056-1212	46"	4"	(2) 116
SR-54	1001-1212, 1004-1212, 1056-1515	54"	4"	(2) 128
SR-59	1001-1515	59"	4"	(2) 152
SR-63	1056-1818	63"	4"	164 & 152
SR-73	1056-2121	73"	4"	(2) 184

SHEAR RING TECHNICAL SPECS

- Series 300 stainless steel bands, nuts, and housings
- Designed to fit Fernco coupling series:

1001 - Clay to Clay	1055 - AC to AC
1004 - Concrete to Concrete	1056 - CI/Plastic to CI/Plastic

No-Hub Couplings

Engineered to connect No-Hub cast iron pipe.



SHIELDED COUPLINGS

Choose the No-Hub Coupling with the patented shield design that provides maximum transfer of pressure from the clamps - to the gasket - to the pipe. Engineered to connect no-hub cast iron pipe in applications replacing the less-efficient hub and spigot.

NO-HUB TECHNICAL SPECS



Patented Bi-Directional Shield Design

The shield will adjust to variations in diameters and circumferences of the pipes being joined, thereby eliminating leak paths. The patented, bi-directional corrugations exert sealing pressure in both parallel and transverse patterns on the gasket and pipe, providing a positive, reliable seal.



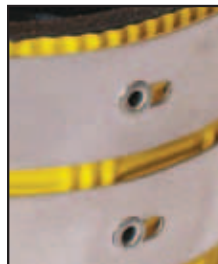
Interlocking Clamp Design

The clamps feature a one-piece screw housing that mechanically interlocks the housing to the band. This one-piece housing design eliminates leak paths that can occur in staked or welded clamps.



Specially Beaded Gasket

Made of an elastomeric compound that meets the requirements of ASTM C564 and features a series of strategically positioned grooves and beads. When tightened, the shield mates with these grooves and beads to exert exceptional sealing pressure and holding power to prevent "pull out" failures.



Floating Eyelet Design

Floating eyelets fasten the clamps to the shield, allowing the clamp band and shield to move independently. This freedom prevents the shield from crimping during tightening, which can lead to leakage later on.

United States

PH: 810-503-9000
FX: 810-503-1015



www.fernco.com

Canada

PH: 519-332-6711
FX: 519-332-8610

No-Hub Couplings - For drain, waste & vent piping.

Standard No-Hub



5/16" hex-head screw applies 60 in.-lbs. of installation torque to the band/shield assembly.

Standard No-Hub Couplings conform to CISPI 310. Couplings comply with ASTM C1277. Gaskets are made from an elastomeric compound that meets the requirements of ASTM C564.

PART NUMBER	SIZE	CLAMPS PER COUPLING	INSTALL TORQUE (inch pounds)
NH-150	1-1/2"	2	60
NH-22	2"	2	60
NH-33	3"	2	60
NH-44	4"	2	60
NH-55	5"	4	60
NH-66	6"	4	60
NH-88	8"	4	60
NH-1010	10"	4	60
NH-1212	12"	6	120
NH-1515	15"	6	120

REDUCING SIZE NO-HUB

NH-215	2" x 1-1/2"	2	60
NH-32	3" x 2"	2	60
NH-42	4" x 2"	2	60
NH-43	4" x 3"	2	60

Medium Duty No-Hub



The distinctive yellow shield quickly identifies the Medium-Duty MD Couplings and makes it easier for inspectors. 5/16" hex-head screw applies 80 in.-lbs. of installation torque to the band/shield assembly.

Medium Duty No-Hub Couplings conform to CISPI 310, Factory Mutual CN 1680. Couplings comply with ASTM C564, ASTM C1540, IAPMO file #3198, Commonwealth of Massachusetts CMR-248 and City of New York MEA 253-98-E. Gaskets are made from an elastomeric compound that meets the requirements of ASTM C564.

PART NUMBER	SIZE	CLAMPS PER COUPLING	INSTALL TORQUE (inch pounds)
MD-150	1-1/2"	4	80
MD-22	2"	4	80
MD-33	3"	4	80
MD-44	4"	4	80
MD-55	5"	6	80
MD-66	6"	6	80
MD-88	8"	6	80
MD-1010	10"	6	80

Heavy Duty No-Hub



The distinctive green shield quickly identifies the Heavy-Duty HD Couplings and makes it easier for inspectors. 3/8" hex-head screw applies 80 in.-lbs. of installation torque to the band/shield assembly. Boasts an ultimate torque rating exceeding 100 in.-lbs. and heavier gauge stainless steel.

Heavy Duty No-Hub Couplings conform to CISPI 310, Factory Mutual EN 1680. Couplings comply with ASTM C564, ASTM 1277, IAPMO file #3198, Commonwealth of Massachusetts CMR-248 and City of New York MEA 253-98-E. Gaskets are made from an elastomeric compound that meets the requirements of ASTM C564.

PART NUMBER	SIZE	CLAMPS PER COUPLING	INSTALL TORQUE (inch pounds)
HD-150	1-1/2"	4	80
HD-22	2"	4	80
HD-33	3"	4	80
HD-44	4"	4	80
HD-55	5"	6	80
HD-66	6"	6	80
HD-88	8"	6	80
HD-1010	10"	6	80



Fernco Flexible Couplings

The industry standard for sewer, drain, waste & vent piping.

Specially formulated PVC compound positively seals any sewer and drain connection.

Because of their quality and ease of installation, Fernco Flexible Couplings have found wide acceptance among sewer and plumbing contractors and municipalities. Fernco couplings are used for all types of in-house and sewer applications: drain waste, repairs, vent piping, house-to-main, cut-ins, conductor and roof drains and increasers-reducers.



Made of tough elastomeric polyvinyl chloride (PVC), they are strong, resilient and unaffected by soil conditions. They are also resistant to chemicals, ultraviolet rays, fungus growth, and normal sewer gases due to the inert nature and physical properties

of the material. And they are leakproof, rootproof and seal against infiltration and exfiltration.

The dimensional flexibility of Fernco couplings ensures leakproof seals on virtually any pipe material: plastic, cast iron, asbestos cement, clay, concrete, steel, copper and ductile iron. All couplings are clearly marked with part number, size, and pipe materials that the coupling will connect. Fernco makes fast delivery of stock items with no minimum order required. For special applications, our custom design service can supply couplings to individual customer requirements.

All Fernco clamps, including the band screw and housing, are made from Series 300 Stainless Steel. Series 316 Stainless Steel Clamps are available upon request.



Tested designs backed by over four decades of proven performance.

- Positive seal against infiltration and exfiltration
- Leakproof, rootproof and are resistant to chemicals, ultraviolet rays, fungus growth, and normal sewer gases
- Conforms to ASTM D 5926, C 1173 and CSA B602
- Connects pipes of same or different sizes and materials quickly and easily
- Stainless steel clamps are corrosion-resistant and rustproof

Maximum test pressure: 4.3 PSI (29.6 KPA)

Maximum operating temperature: 140° F nonconsistent

For further information on code approvals, please contact the Fernco Customer Service Department.

United States
PH: 810-503-9000
FX: 810-503-1015



www.fernco.com

Canada
PH: 519-332-6711
FX: 519-332-8610



Stock Couplings



1056-075 coupling shown at approximately actual size of 2 3/8" high

Fernco makes the most complete line in the industry, from sizes of 3/4" to 27" (19mm to 381mm) with couplings available to connect any two pipes. Large Diameter Couplings are available and can be made to your specific requirements. Because Fernco Couplings have earned a reputation for consistent, superior performance, you can have full confidence in their quality and reliability.

Available from
3/4" to 60"

Complete sizing charts on pages 14-16



1056-2727 coupling shown at actual size of 27" dia.

FLEXIBLE COUPLINGS

Large Diameter Couplings

For non-standard or special size applications.

The ideal coupling for repairs, alterations or rehabilitation of large diameter sewer pipe. These couplings are made from flexible PVC and offer easy installation and leak free connections. They are engineered for use with all common sewer piping materials: clay, concrete, cast and ductile iron, AC, plastic or fiberglass.



This product can be custom ordered for ANY common sewer pipe size and material combination.

LDC TECHNICAL SPECS

- Accommodates an O.D. difference of up to one inch*
- 10 inches wide
- 1/2 inch thick with multiple sealing ribs
- 4 - Series 304 (18-8) stainless steel High Torque Clamps with multiple take up points
- Up to 120 in-lbs of torque for greater sealing pressure.

Order LDCs by specifying the outside diameter (O.D.) of both pipes in inches.

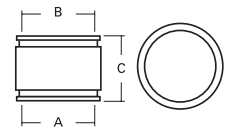
*Where O.D. differences range from 1" - 12", a Fernco bushing system is available.

NOTE: Never install this type of coupling until you read and understand the installation instructions and verify the dimensions ordered.



Flexible Couplings - SIZING CHARTS for STOCK COUPLINGS

*Designated part numbers come with an insert bushing.



1001 Series - Clay to Clay

Part No.	A		B		C	
	in.	mm	in.	mm	in.	mm
1001-44	5.29	134	5.29	134	4.10	104
1001-44WC	5.51	140	5.51	140	3.97	101
1001-54	6.05	154	5.54	141	5.00	127
1001-55	6.48	165	6.48	165	5.97	152
1001-64	7.39	188	5.63	143	6.02	153
*1001-64WC	8.00	203	5.50	140	6.00	152
1001-65	7.35	187	6.61	168	5.76	146
1001-66	7.50	191	7.50	191	6.00	152
1001-66WC	8.01	203	8.01	203	5.91	150
*1001-84	9.50	241	5.13	130	5.68	144
*1001-86	9.50	241	7.13	181	5.68	144
1001-86WC	9.96	253	7.80	198	5.93	151
1001-88	9.65	245	9.65	245	6.00	152
1001-88WC	9.96	253	9.96	253	5.93	150
*1001-10-8	12.50	318	9.65	245	6.13	156
1001-1010	12.40	315	12.40	315	6.00	152
1001-1010WC	12.40	315	12.40	315	5.90	150
1001-1210	14.50	368	12.50	318	6.37	162
1001-1212	14.51	369	14.51	369	6.00	152
1001-1212WC	15.25	387	15.25	387	6.42	163
*1001-1510	18.14	461	12.60	320	10.14	258
*1001-1512	18.14	461	14.38	365	6.85	174
1001-1515	18.14	461	18.14	461	9.89	251
1001-1818	21.90	556	21.90	556	9.63	245
1001-2121	25.40	645	25.40	645	9.89	251
1001-2424	28.97	736	28.97	736	9.89	251
1001-2727	32.40	823	32.40	823	9.89	251



1002 Series - Clay to Cast Iron or Plastic

Part No.	A		B		C	
	in.	mm	in.	mm	in.	mm
*1002-42	5.25	133	2.38	60	3.91	99
1002-43	5.25	133	3.38	86	3.91	99
*1002-43WC	5.40	137	3.50	89	4.00	102
1002-44	5.14	131	4.52	115	3.96	101
1002-44WC	5.40	137	4.56	116	4.00	102
1002-46	5.18	132	6.39	162	5.82	148
*1002-54	6.05	154	4.38	111	5.28	134
*1002-54WC	6.84	174	4.29	109	5.93	151

1002-55	6.05	154	5.54	141	5.03	128
*1002-55WC	6.81	173	5.17	131	5.81	148
1002-64	7.34	186	4.50	114	5.56	141
*1002-64WC	8.00	203	4.50	114	6.00	152
1002-65	7.39	188	5.63	143	5.68	144
1002-66	7.35	187	6.61	168	5.76	146
1002-66WC	8.00	203	6.66	169	6.00	152
*1002-84	9.33	237	4.38	111	5.93	151
1002-86	9.33	237	6.20	157	5.93	151
*1002-86WC	10.00	254	6.38	162	6.00	152
1002-88	9.63	245	8.64	219	5.74	146
1002-88WC	10.00	254	8.66	220	6.00	152
*1002-10-6	12.50	318	6.38	162	6.38	162
*1002-10-8	12.50	318	8.50	216	6.13	156
1002-1010	12.50	318	10.50	267	5.88	149
1002-1010WC	12.60	320	10.60	269	6.37	162
*1002-1210	14.50	368	10.75	273	6.60	168
1002-1212	14.50	368	12.50	318	6.37	162
1002-1212WC	16.29	414	12.39	315	6.30	160
*1002-1215	15.38	391	14.38	365	6.32	161
*1002-12-8	14.50	368	8.50	216	6.60	168
*1002-1510	18.14	461	10.60	269	6.85	174
*1002-1512	18.14	461	12.60	320	6.85	174
1002-1515	18.14	461	15.60	396	6.85	174
1002-1515WC	19.82	503	15.43	392	9.68	246
1002-1818	21.90	556	18.88	480	9.63	245
*1002-1818WC	22.59	574	18.90	480	9.89	251
*1002-2121	25.40	645	22.30	566	10.14	258
*1002-2424	28.97	736	25.00	635	10.14	258
*1002-2727	32.40	823	28.20	716	10.14	258



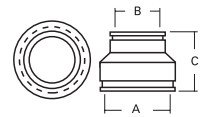
1003 Series - Clay to Asbestos Cement Fibre or Ductile Iron

Part No.	A		B		C	
	in.	mm	in.	mm	in.	mm
1003-44	5.39	137	4.89	124	3.92	100
1003-44WC			5.00	127		
1003-46	5.17	131	6.81	173	5.81	148
*1003-54	6.05	154	5.00	127	5.28	134
1003-55	6.00	152	5.86	149	4.91	125
1003-64	7.39	188	5.63	143	5.68	144
*1003-64WC	8.01	203	5.00	127	5.95	151
*1003-65	7.35	187	5.90	150	6.00	152
1003-66	7.31	186	6.99	178	5.92	150
*1003-66WC	8.01	203	6.80	173	5.95	151



Flexible Couplings - SIZING CHARTS for STOCK COUPLINGS

*Designated part numbers come with an insert bushing.



*1003-85	9.33	237	5.90	150	6.18	157
*1003-86	9.63	245	7.20	183	5.99	152
*1003-86WC	10.00	254	7.20	183	6.00	152
1003-88	9.50	241	9.00	229	5.99	152
*1003-88WC	9.96	253	9.05	230	5.93	151
*1003-8-10	11.05	281	9.65	245	5.95	151
*1003-1010	12.40	315	11.12	282	6.25	159
*1003-1010WC	12.40	315	11.12	282	6.00	152
*1003-10-6	12.40	315	6.80	173	6.25	159
*1003-10-8	12.50	318	9.05	230	6.13	156
*1003-1210	14.50	368	11.12	282	6.62	168
1003-1212	15.00	381	13.29	337	5.76	146
*1003-1212WC	15.25	387	13.20	335	6.42	163
*1003-12-8	14.50	368	9.05	230	6.62	168
*1003-1510	18.14	461	11.12	282	6.85	174
*1003-1512	18.14	461	13.20	335	6.85	174
*1003-1515	18.14	461	16.50	419	10.14	258
1003-1516	18.10	460	17.80	452	9.89	251
*1003-1818	21.60	549	19.50	495	9.89	251



1004 Series - Concrete to Concrete

Part No.	A		B		C	
	in.	mm	in.	mm	in.	mm
1004-44	5.51	140	5.51	140	3.97	101
*1004-64	7.67	195	5.62	143	5.86	149
1004-66	7.58	193	7.58	193	5.94	151
*1004-86	10.25	260	7.80	198	6.18	157
1004-88	10.38	264	10.38	264	5.90	150
1004-10-8	12.50	318	10.65	271	6.37	162
1004-99	Use part number 1001-1010					
1004-1010	12.40	315	12.40	315	6.00	152
*1004-1210	15.38	391	12.60	320	6.40	163
1004-1212	15.38	391	15.38	391	6.40	163
1004-1515	19.70	500	19.70	500	9.89	251
1004-1818	22.50	572	22.50	572	9.89	251
1004-2121	26.70	678	26.70	678	9.89	251
1004-2424	30.50	775	30.50	775	9.89	251
1004-2727	34.00	864	34.00	864	9.89	251



1005 Series - Concrete to Clay

Part No.	A		B		C	
	in.	mm	in.	mm	in.	mm
*1005-44	5.51	140	5.00	127	4.22	107
*1005-64	7.58	193	5.00	127	6.19	157
*1005-66	7.58	193	7.38	187	6.19	157
*1005-86	10.38	264	7.20	183	6.15	156
*1005-88	10.38	264	9.65	245	6.15	156
1005-1010	12.40	315	12.40	315	6.00	152
*1005-1210	15.38	391	12.60	320	6.40	163
*1005-1212	15.38	391	14.38	365	6.40	163
*1005-1512	19.82	503	14.38	365	9.68	246
*1005-1515	19.70	500	17.40	442	9.89	251



1006 Series - Concrete to Cast Iron or Plastic

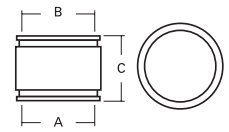
Part No.	A		B		C	
	in.	mm	in.	mm	in.	mm
1006-43	5.61	142	3.53	90	3.90	99
1006-44	5.57	141	4.31	109	3.96	101
1006-46	5.46	139	6.48	139	5.77	147
1006-64	7.75	197	4.31	109	5.92	150
*1006-65	7.66	195	5.50	140	5.86	149
1006-66	7.66	195	6.65	169	5.86	149
*1006-68	7.80	198	8.64	219	6.04	153
*1006-84	10.25	260	4.38	111	6.18	157
*1006-86	10.25	260	6.38	162	6.18	157
1006-88	10.25	260	8.50	216	5.93	151
*1006-10-6	12.60	320	6.38	162	6.60	168
*1006-10-8	12.50	318	8.38	213	6.62	168
1006-1010	12.60	320	10.60	269	6.37	162
*1006-12-8	16.29	414	8.38	213	6.55	166
*1006-1210	16.29	414	10.75	273	6.55	166
1006-1212	16.29	414	12.39	315	6.30	160
*1006-1512	19.82	503	12.60	320	9.93	252
1006-1515	19.82	503	15.43	392	9.68	246
*1006-1818	22.50	572	18.90	480	9.89	251
*1006-2121	26.70	678	22.30	566	9.89	251
*1006-2424	30.50	775	25.00	635	9.89	251
*1006-2727	34.00	864	28.00	711	9.89	251

FLEXIBLE COUPLINGS

Flexible Couplings continued on page 16

Flexible Couplings - SIZING CHARTS for STOCK COUPLINGS

*Designated part numbers come with an insert bushing.



1051 Series - Asbestos Cement Fibre (AC) or Ductile Iron to Cast Iron or Plastic

Part No.	A		B		C	
	in.	mm	in.	mm	in.	mm
*1051-43	4.80	122	3.38	86	4.06	103
1051-44	4.80	122	4.53	115	4.06	103
*1051-45	5.00	127	5.52	140	4.22	107
*1051-46	4.75	121	6.60	168	5.99	152
1051-54	5.75	146	4.47	114	3.95	100
1051-55	6.05	154	5.54	141	5.03	128
*1051-56	5.90	150	6.60	168	5.99	152
1051-64	6.84	174	4.30	109	5.93	151
1051-65	6.81	173	5.17	131	5.81	148
1051-66	6.81	173	6.39	162	5.85	148
*1051-68	6.80	173	8.64	219	6.29	160
*1051-86	9.12	232	6.38	162	6.23	158
1051-88	9.12	232	8.49	216	5.98	152
*1051-10-8	11.05	281	8.38	213	5.95	151
1051-1010	11.05	281	10.65	271	5.95	151
*1051-1210	13.00	330	10.75	273	6.49	165
1051-1212	13.00	330	12.38	314	6.24	158
*1051-1215	15.44	392	13.20	335	10.00	254
1051-1515	15.90	404	15.90	404	9.89	251
1051-1615	18.14	461	15.60	396	6.85	174
1051-1818	19.70	500	18.90	480	9.89	251

*1055-1615	18.10	460	16.50	419	9.89	251
1055-1616	18.10	460	18.10	460	9.89	251
1055-1818	19.70	500	19.70	500	9.89	251



1056 Series - CI, PL, Copper, ST or Lead to CI, PL, Copper, ST or Lead

Part No.	A		B		C	
	in.	mm	in.	mm	in.	mm
1056-075	1.05	27	1.05	27	2.38	60
1056-100	1.31	33	1.31	33	2.40	61
1056-125	1.63	41	1.63	41	3.45	88
1056-150/125	1.94	49	1.63	41	3.45	88
1056-150	1.94	49	1.94	49	3.43	87
1056-215	2.41	61	1.84	47	3.39	86
1056-22	2.41	61	2.41	61	3.45	88
1056-300	2.95	75	2.95	75	2.70	69
1056-315	3.35	85	1.91	49	3.87	98
1056-32	3.52	89	2.38	60	3.96	101
1056-33	3.46	88	3.46	88	3.98	101
1056-415	4.40	112	1.91	49	3.96	101
1056-42	4.40	112	2.35	60	3.88	99
1056-43	4.46	113	3.52	89	4.03	102
1056-44	4.58	116	4.58	116	4.02	102
1056-53	5.61	142	3.53	90	3.90	99
1056-54	5.57	141	4.26	108	3.95	100
1056-55	5.52	140	5.52	140	3.97	101
*1056-63	6.61	168	3.38	86	5.75	146
1056-64	6.61	168	4.46	113	5.75	146
1056-65	6.48	165	5.46	139	5.77	147
1056-66	6.60	168	6.60	168	5.74	146
*1056-84	8.51	216	4.38	111	5.99	152
1056-86	8.51	216	6.38	162	5.99	152
1056-88	8.64	219	8.64	219	6.04	153
*1056-10-6	10.25	260	6.38	162	6.23	158
1056-10-8	10.25	260	8.42	214	5.98	152
1056-1010	10.63	270	10.63	270	5.89	150
*1056-12-8	12.50	318	8.38	213	6.62	168
1056-1210	12.50	318	10.65	271	6.37	162
1056-1212	12.52	318	12.52	318	6.32	161
1056-1512	15.75	400	12.25	311	5.71	145
1056-1515	15.44	392	15.44	392	10.00	254
*1056-1815	19.00	483	15.30	389	9.89	251
1056-1818	19.00	483	19.00	483	9.89	251
1056-2121	22.50	572	22.50	572	9.89	251
1056-2424	25.10	638	25.10	638	9.89	251
1056-2727	28.30	719	28.30	719	9.89	251



1055 Series - AC or Ductile Iron to AC or Ductile Iron

Part No.	A		B		C	
	in.	mm	in.	mm	in.	mm
1055-44	4.76	121	4.76	121	3.96	101
*1055-54	6.05	154	5.00	127	5.28	134
1055-55	6.00	152	5.86	149	4.91	125
*1055-63	6.81	173	3.38	86	5.56	141
1055-64	6.81	173	4.80	122	5.56	141
1055-65	6.84	174	5.89	150	5.88	149
1055-66	6.95	177	6.95	177	5.92	150
*1055-84	9.12	232	5.00	127	6.23	158
*1055-86	9.12	232	6.80	173	6.23	158
1055-88	9.05	230	9.05	230	5.98	152
*1055-10-8	11.05	281	9.05	230	5.95	151
1055-1010	10.86	276	10.86	276	5.91	150
*1055-12-8	13.00	330	9.05	230	6.24	158
*1055-1210	13.00	330	11.12	282	6.24	158
1055-1212	13.20	335	13.20	335	5.97	152
*1055-1512	16.80	427	13.20	335	9.89	251
1055-1515	16.80	427	16.80	427	9.89	251



Flexible Coupling Part Number Chart

- **Cast Iron Soil Pipe**
 - Extra Heavy (XH)
 - Service Weight (SV)
 - No-Hub (NH)
- **Clay**
- **Concrete**

- **Plastic**
 - ABS / PVC (DWW Schedule 40, 80, 120) 4" - 12"
 - PVC / Sewer & Drain (ASTM D 3034) 4" - 15"
 - PVC Large Dia. Sewer Pipe (ASTM F 679) 18" - 48"
- **Steel**
- **Lead**

- **Copper**
- **Asbestos Cement Fibre**
- **Ductile Iron**
- **C 900** (Ductile Iron Pipe Size)
- **Corrugated** (Use 1070 Series)

*Designated part numbers come with an insert bushing.

SERIES	1001	1002	1003	1004	1005	1006	1051	1055	1056
PIPE SIZES	Clay TO Clay	Clay TO Cast Iron, Plastic, Copper, Steel or Lead	Clay TO Asbestos Cement Fibre or Ductile Iron	Concrete TO Concrete	Concrete TO Clay	Concrete TO Cast Iron, Plastic, Copper, Steel or Lead	Asbestos Cement Fibre or Ductile Iron TO Cast Iron, Plastic, Copper, Steel or Lead	Asbestos Cement Fibre or Ductile Iron TO Asbestos Cement Fibre or Ductile Iron	Cast Iron, Plastic, Copper, Steel or Lead TO Cast Iron, Plastic, Copper, Steel or Lead
4" to 2"		1002-42							1056-42
4" to 3"		1002-43				1006-43	1051-43*		1056-43
4" to 4"	1001-44	1002-44	1003-44	1004-44	1005-44*	1006-44	1051-44	1055-44	1056-44
4" to 6"		1002-46	1003-46			1006-46	1051-46		
5" to 3"									1056-53
5" to 4"	1001-54	1002-54*	1003-54*				1051-54	1055-54*	1056-54
5" to 5"	1001-55	1002-55	1003-55				1051-55	1055-55	1056-55
6" to 3"									1056-63*
6" to 4"	1001-64	1002-64	1003-64	1004-64*	1005-64*	1006-64	1051-64	1055-64	1056-64
6" to 5"	1001-65	1002-65	1003-65*			1006-65*	1051-65	1055-65	1056-65
6" to 6"	1001-66	1002-66	1003-66	1004-66	1005-66*	1006-66	1051-66	1055-66	1056-66
8" to 4"									1056-84*
8" to 5"			1003-85*						
8" to 6"	1001-86	1002-86	1003-86*	1004-86*	1005-86*	1006-86*	1051-86*	1055-86*	1056-86
8" to 8"	1001-88	1002-88	1003-88	1004-88	1005-88*	1006-88	1051-88	1055-88	1056-88
10" to 6"		1002-10-6*	1003-10-6*			1006-10-6*			1056-10-6*
10" to 8"	1001-10-8*	1002-10-8*	1003-10-8*	1004-10-8		1006-10-8*	1051-10-8*	1055-10-8*	1056-10-8
10" to 10"	1001-1010	1002-1010	1003-1010*	1004-1010	1005-1010	1006-1010	1051-1010	1055-1010	1056-1010
12" to 8"		1002-12-8*				1006-12-8*		1055-12-8*	1056-12-8*
12" to 10"	1001-1210	1002-1210*	1003-1210*	1004-1210*	1005-1210*	1006-1210*	1051-1210*	1055-1210*	1056-1210
12" to 12"	1001-1212	1002-1212	1003-1212	1004-1212	1005-1212*	1006-1212	1051-1212	1055-1212	1056-1212
15" to 10"	1001-1510*	1002-1510*	1003-1510*						
15" to 12"	1001-1512*	1002-1512*	1003-1512*		1005-1512*				1056-1512
15" to 15"	1001-1515	1002-1515	1003-1515*	1004-1515	1005-1515*	1006-1515			1056-1515
16" to 15"			1003-1516				1051-1615	1055-1615*	
18" to 15"									1056-1815*
18" to 18"	1001-1818	1002-1818	1003-1818*	1004-1818		1006-1818*	1051-1818	1055-1818	1056-1818
21" to 21"	1001-2121	1002-2121*		1004-2121		1006-2121*			1056-2121
24" to 24"	1001-2424	1002-2424*		1004-2424		1006-2424*			1056-2424
27" to 27"	1001-2727	1002-2727*		1004-2727		1006-2727*			1056-2727





Plastic Socket Couplings

Couplings fit neatly over plastic pipes and sockets, making socket-to-pipe and socket-to-socket connections incredibly easy and reliable. They can even be used with plastic traps.



1059 Series -
Plastic Socket to Plastic Pipe

Part No.	A		B		C	
	in.	mm	in.	mm	in.	mm
1059-150	2.26	57	1.97	50	3.90	99
*1059-215	2.69	68	1.90	48	3.91	99
1059-22	2.70	69	2.40	61	3.91	99
*1059-32	3.99	101	2.38	60	3.99	101
1059-33	3.99	101	3.49	89	3.99	101
*1059-42	5.01	127	2.38	60	3.99	101
*1059-43	5.01	127	3.38	86	3.99	101
1059-44	5.01	127	4.50	114	3.99	101



1060 Series -
Plastic Socket to Plastic Socket

Part No.	A		B		C	
	in.	mm	in.	mm	in.	mm
1060-150	2.26	57	2.26	57	3.92	100
1060-22	2.70	69	2.70	69	3.95	100
1060-33	3.94	100	3.94	100	3.97	101
1060-44	5.01	127	5.01	127	3.97	101

Ultra-Rib™ Sewer Pipe Couplings



1072 Series -
ETI x Asbestos Cement or Ductile Iron

Part No.	A		B		C	
	in.	mm	in.	mm	in.	mm
1072-1212	14.00	356	14.00	356	9.89	251
1072-1515	16.80	427	16.80	427	9.89	251



1073 Series -
ETI x SDR-35 Plastic

Part No.	A		B		C	
	in.	mm	in.	mm	in.	mm
*1073-1212	14.00	356	12.25	311	9.89	251
*1073-1515	16.80	427	15.30	389	9.89	251

Corrugated Pipe Couplings



1070 Series -
ADS and Hancor Corrugated Polyethylene to Plastic Pipe

Part No.	A		B		C	
	in.	mm	in.	mm	in.	mm
*1070-32	3.57	91	2.38	60	3.96	101
1070-33	3.57	91	3.44	87	3.96	101
*1070-42	4.76	121	2.38	60	3.94	100
*1070-43	4.76	121	3.38	86	3.94	100
1070-44	4.76	121	4.29	109	3.94	100
*1070-63	6.83	173	3.38	86	5.91	150
*1070-64	6.83	173	4.38	111	5.91	150
*1070-65	6.83	173	5.50	140	5.91	150
1070-66	6.83	174	6.50	165	5.91	150
*1070-84	9.76	248	4.38	111	5.70	145
*1070-86	9.76	248	6.38	162	5.70	145
1070-88	9.76	248	8.42	214	5.70	145



*Designated part numbers come with an insert bushing.





HTRC Series Corrugated Pipe Couplings

Large Diameter Corrugated Pipe Couplings - 10" up to 60"



FLEXIBLE COUPLINGS

1070 HTRC Series Corrugated Polyethylene to Plastic

Part No.	A		B		C	
	in.	mm	in.	mm	in.	mm
*1070-10-8HTRC	11.6	295	8.4	213	6.0	152
*1070-1010HTRC	11.6	295	10.5	267	6.0	152
*1070-1210HTRC	14.4	366	10.5	267	10.0	254
*1070-1212HTRC	14.4	366	12.5	318	10.0	254
*1070-1515HTRC	17.7	450	15.3	389	10.0	254
*1070-1818HTRC	21.3	541	18.7	475	10.0	254
*1070-2424HTRC	28.1	714	24.8	630	10.0	254
*1070-3030HTRC	35.4	899	31.5	800	10.0	254
*1070-3636HTRC	41.6	1057	39.4	1001	10.0	254
*1070-4242HTRC	47.7	1212	44.5	1130	10.0	254
*1070-4848HTRC	54.1	1374	50.8	1290	10.0	254

*Designated part numbers come with an insert bushing.



1071 HTRC Series Corrugated Polyethylene to Corrugated Polyethylene

Part No.	A		B		C	
	in.	mm	in.	mm	in.	mm
1071-1010HTRC	11.6	295	11.6	295	6.0	152
1071-1212HTRC	14.4	366	14.4	366	10.0	254
1071-1515HTRC	17.7	450	17.7	450	10.0	254
1071-1818HTRC	21.3	541	21.3	541	10.0	254
1071-2424HTRC	28.1	714	28.1	714	10.0	254
1071-3030HTRC	35.4	899	35.4	899	10.0	254
1071-3636HTRC	41.6	1057	41.6	1057	10.0	254
1071-4242HTRC	47.7	1212	47.7	1212	10.0	254
1071-4848HTRC	54.1	1374	54.1	1374	10.0	254
1071-5454HTRC	61.0	1549	61.0	1549	10.0	254
1071-6060HTRC	66.8	1697	66.8	1697	10.0	254

TECHNICAL SPECS

Ultimate Shear Resistance - .012" (12mil) 300 series stainless steel shear ring offers greater sealing force on corrugated pipe and ensures a water tight seal is maintained.

Ultimate Pipe Alignment - Due to the thickness and strength of the shear ring, you are assured consistent pipe alignment against shear forces from soil compaction, shifting and settling.

Ultimate Sealing High Torque Clamps - 301 series stainless steel **High Torque Clamps**, offering greater sealing power and excellent corrosion resistance. All 10 inch diameter couplings are 6 inches wide with 2 clamp areas, and all 12 inch diameter and larger couplings are 10 inches wide with 4 clamp areas.

Ultimate Sealing Gasket - The flexible PVC gasket has a smooth inside surface providing greater sealing performance than ribbed rubber gaskets. The smooth internal wall of the gasket makes contact 360° over its entire length. This equates to a larger sealing surface and a higher coefficient of friction, providing maximum sealing capabilities as well as preventing slippage under the weight of shear forces.

Additional sizes available upon request



Western Series Center Stop Couplings

TECHNICAL SPECS

- Center stop coupling design with bushing inserts
- Bushings available for most common 4", 6" and 8" transitions of clay, cast iron or plastic, and A/C to:
 - Sch. 40 PVC, ABS Plastic and SDR-35 Plastic
 - Bead, Bald, and Plain-End Cast Iron
 - Rough Barrel and Machined-End A/C
 - Ductile Iron
- 300 series stainless steel band clamps (316 available)



Bushings

Part No.	Description	Size
481-2.38	4" Clay x PECl	5.38" x 2.38"
481-3.38	4" Clay x PECl	5.38" x 3.38"
481-3.50	4" Clay x Bead CI\PL\XHCl	5.38" x 3.50"
481-4.25	4" Clay x SDR-35 / PVC	5.38" x 4.25"
481-4.38	4" Clay x PECl / Bald CI (J)	5.38" x 4.39"
481-4.50	4" Clay x ABS / Sch. 40	5.38" x 4.50"
481-4.63	4" Clay x Bead CI / MEAC (C)	5.38" x 4.63"
481-4.90	4" Clay x RBAC / CI 150 DI (B)	5.38" x 4.90"
681-6.38	6" Clay x PECl / PVC (J)	7.98" x 6.37"
681-6.63	6" Clay x ABS / Bead CI / MEAC (C)	7.98" x 6.62"
881-8.38	8" Clay x PECl / PVC (J)	10.18" x 8.42"
881-8.63	8" Clay x ABS / Bead CI / MEAC (C)	10.18" x 8.64"
881-9.00	8" Clay x RBAC / CI 150 DI (B)	10.18" x 9.00"
885-8.38	8" A/C x PECl / PVC (D)	9.00" x 8.42"
885-8.63	8" Clay x ABS / Bead CI / MEAC (AEK)	9.00" x 8.64"

Couplings

Part No.	Description	Size
1081-44	4" Clay x 4" Clay	5.44" x 5.44"
1081-66	6" Clay x 6" Clay	8.00" x 8.00"
1081-88	8" Clay x 8" Clay	10.00" x 10.00"
1085-88	8" A/C x 8" A/C	9.00" x 9.00"
1086-33	3" CI or PL x 3" CI or PL	3.40" x 3.40"
1086-44	4" CI or PL x 4" CI or PL	4.56" x 4.56"

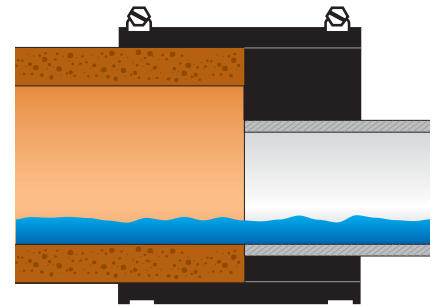
Eccentric Bushings/Couplings

Maintaining a continuous flowline in critical grade conditions.



EB TECHNICAL SPECS

- Available for **ALL** common sewer pipe materials and sizes
- Aligns the inside wall of the two pipes
- Meets ASTM C 1173 and D 5926
- 300 series stainless steel clamps



FLEXIBLE COUPLINGS

The following is a list of the more popular sewer pipe size / material combinations. Specific applications not listed here are available or can be custom ordered.

1002 EB Series - Clay to Cast Iron or Plastic

Part No.	Description
1002-42EB	Eccentric connection of 4" Clay to 2" CI or PL
1002-43EB	Eccentric connection of 4" Clay to 3" CI or PL
1002-44EB	Eccentric connection of 4" Clay to 4" CI or PL
1002-64EC	One piece eccentric connection of 6" Clay to 4" CI or PL
1002-1212EB	Eccentric connection of 12" Clay to 12" CI or PL
1002-1215EB	Eccentric connection of 12" Clay to 15" CI or PL
1002-1512EB	Eccentric connection of 15" Clay to 12" CI or PL
1002-1515EB	Eccentric connection of 15" Clay to 15" CI or PL

1006 EB Series - Concrete to Cast Iron or Plastic

Part No.	Description
1006-44EB	Eccentric connection of 4" Concrete to 4" CI or PL
1006-64EB	Eccentric connection of 6" Concrete to 4" CI or PL

1051 EB Series -

Asbestos Cement Fibre (AC) or Ductile Iron to Cast Iron or Plastic

Part No.	Description
1051-10-6EB	Eccentric connection of 10" AC or DI to 6" CI or PL
1051-10-8EB	Eccentric connection of 10" AC or DI to 8" CI or PL
1051-12-4EB	Eccentric connection of 12" AC or DI to 4" CI or PL
1051-12-6EB	Eccentric connection of 12" AC or DI to 6" CI or PL

1055 EB Series -

Asbestos Cement Fibre (AC) or Ductile Iron to AC or Ductile Iron

Part No.	Description
1055-86EB	Eccentric connection of 8" AC or DI to 6" AC or DI
1055-12-8EB	Eccentric connection of 12" AC or DI to 8" AC or DI

1056 EB Series - CI, PL, Copper, ST or Lead to CI, PL, Copper, ST or Lead

Part No.	Description
1056-315EB	Eccentric connection of 3" CI or PL to 1½" CI or PL
1056-32EB	Eccentric connection of 3" CI or PL to 2" CI or PL
1056-415EB	Eccentric connection of 4" CI or PL to 1½" CI or PL
1056-42EB	Eccentric connection of 4" CI or PL to 2" CI or PL
1056-43EB	Eccentric connection of 4" CI or PL to 3" CI or PL
1056-54EB	Eccentric connection of 5" CI or PL to 4" CI or PL
1056-6/150EB	Eccentric connection of 6" CI or PL to 1½" CI or PL
1056-62EB	Eccentric connection of 6" CI or PL to 2" CI or PL
1056-63EB	Eccentric connection of 6" CI or PL to 3" CI or PL
1056-64EB	Eccentric connection of 6" CI or PL to 4" CI or PL
1056-65EB	Eccentric connection of 6" CI or PL to 5" CI or PL
1056-83EB	Eccentric connection of 8" CI or PL to 3" CI or PL
1056-84EB	Eccentric connection of 8" CI or PL to 4" CI or PL
1056-85EB	Eccentric connection of 8" CI or PL to 5" CI or PL
1056-86EB	Eccentric connection of 8" CI or PL to 6" CI or PL
1056-10-4EB	Eccentric connection of 10" CI or PL to 4" CI or PL
1056-10-6EB	Eccentric connection of 10" CI or PL to 6" CI or PL
1056-10-8EB	Eccentric connection of 10" CI or PL to 8" CI or PL
1056-12-6EB	Eccentric connection of 12" CI or PL to 6" CI or PL
1056-12-8EB	Eccentric connection of 12" CI or PL to 8" CI or PL
1056-1210EB	Eccentric connection of 12" CI or PL to 10" CI or PL
1056-1512EB	Eccentric connection of 15" CI or PL to 12" CI or PL

When ordering Eccentric Bushings/Couplings, please provide the pipe sizes and materials being connected.



Qwik Tees and Qwik Ells

Extra length fittings that are ideal for replacements.

FLEXIBLE COUPLINGS



Qwik Tees and Ells let you make 90° connections of all common household drain, waste and vent pipes quickly and easily without using special tools or fittings. Because they're exceptionally flexible and extra long, they're the ideal replacement for fittings cut out at the joint during alteration or repair. Reducing sizes are made with separately supplied Qwik Bushings.



Damaged or leaking fitting is cut out



The extra length of the Qwik Ell completes the repair



Qwik Tees - 90°

For CI, PL, Copper, ST or Lead Pipes

Part No.	A		B		C	
	in.	mm	in.	mm	in.	mm
QT-150	1.88	48	1.88	48	1.88	48
QT-200	2.31	59	2.31	59	2.31	59
QT-300	3.40	86	3.40	86	3.40	86
QT-400	4.52	115	4.52	115	4.52	115



Qwik Ells - 90°

For CI, PL, Copper, ST or Lead Pipes

Part No.	A		B	
	in.	mm	in.	mm
QL-150	1.90	48	1.90	48
QL-200	2.31	59	2.31	59
QL-300	3.44	87	3.44	87
QL-400	4.44	113	4.44	113

QT and QL TECHNICAL SPECS

- Extra length makes up for cut out fitting
- Flexibility makes for easy installation in limited spaces
- Reducing sizes can be made with insert Qwik Bushing
- 300 series stainless steel clamps



Qwik Bushings -

For Reducing Qwik Tees & Qwik Ells

Part No.	A		B	
	in.	mm	in.	mm
QB-215	2.37	60	1.88	48
QB-32	3.41	87	2.31	59
QB-43	4.00	101	3.00	76



United States

PH: 810-503-9000
FX: 810-503-1015



www.fernco.com

Canada

PH: 519-332-6711
FX: 519-332-8610



Expansion Joints

One piece design for trouble-free vertical pipe installations.

These expansion joints allow for thermal expansion and contraction of drain, waste and vent pipes and inside rain water conductor systems, eliminating costly offsets normally used to accommodate expansion and contraction.



Part No.	Nominal Pipe Size
XJ-150	1-1/2" (38mm)
XJ-2	2" (50mm)
XJ-3	3" (76mm)
XJ-4	4" (101mm)

XJ TECHNICAL SPECS

- Unique one-piece construction
- Internal stops of positive positioning
- No sliding parts to malfunction
- No packing to jam, freeze or leak
- Maintenance-free

Thermal Expansion Table for P.V.C. Pipe

Temp. Change Degrees F	Column 1 Expansion Per Ft. (Inches/mm)	Column 2 Limit Per Expansion Joint (Ft.)
50°	0174 (.0442cm)	86
60°	0209 (.0351cm)	71
70°	0244 (.0620cm)	61
80°	0278 (.0760cm)	54
100°	0348 (.0884cm)	43

Fernco Expansion Joints will accommodate a maximum of 1-1/2" expansion and 1/2" contraction from a normal position. For A.B.S. pipe use 2 x value of Column 1 and 1/2 x value of Column 2.



FLEXIBLE COUPLINGS

Pipe Sleeve Seals



To seal pipe sleeves and carrier pipes.

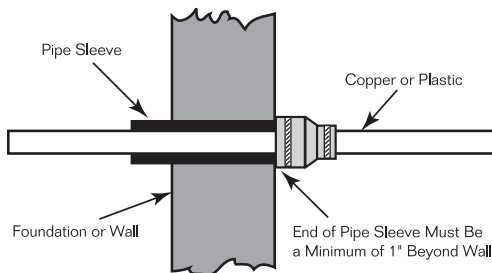
Pipe-Sleeve Seals provide positive, mechanical seals around pipe sleeves and copper or plastic carrier pipe, above or below ground, to keep out dirt, water, and insects.

Carrier pipe slides easily through the Fernco pipe sleeve seal, for fast, convenient installation. Two all-stainless steel clamps tighten easily with a screw driver. No need for mastics or other sealing compounds that can damage plastic pipes.



TECHNICAL SPECS

- Positive, mechanical seal around pipe sleeves and copper or plastic carrier pipe
- Use above or below ground
- No mastics or other sealing compounds needed
- 300 series stainless steel clamps



Part No.	Pipe Sleeve Size	Carrier Pipe Size
DTC 110	1-1/2"	3/4 or 1"
DTC 210	2"	3/4 or 1"
1056-315	3"	1-1/2"
1056-32	3"	2"
1056-415	4"	1-1/2"
1056-42	4"	2"
1056-43	4"	3"





Flexible Tap Saddles

The faster & less costly way to make sewer main connections.

Rigid, yet flexible enough for sewer mains:

- 4" saddles fit 6" pipe and larger
- 6" saddles fit 8" pipe and larger

TS TECHNICAL SPECS

- Conforms to ASTM D 5926
- Manufactured from a specially formulated high durometer PVC
- Includes special "slip-lock" clamps of 300 series stainless steel that make for fast and simple installations on any type of pipe from 6" to 15"
- Larger apron with locating ring fits 5" or 7" standard shell cutters
- Large band grooves



TSW-4

Available for all **4" or 6"** plastic or cast iron drain pipe inlets in **Tee or Wye** configurations.

TST-4



Part No.	Description
TST-4	4" Cast Iron or Plastic Inlet - Tee Tap Saddle
TST-6	6" Cast Iron or Plastic Inlet - Tee Tap Saddle
TSW-4	4" Cast Iron or Plastic Inlet - Wye Tap Saddle
TSW-6	6" Cast Iron or Plastic Inlet - Wye Tap Saddle
312-300	Extension Clamps - For larger than 15" sewer mains

NOTE: Flexible Tap Saddles provide a soil-tight seal. Use Fernco Tap Saddle Pressure Kit TSPK-46 for a water-tight connection.

Tap Saddle Pressure Kit

One size for use with Fernco models: TST-4, TST-6, TSW-4, TSW-6.



Provide your Flexible Tap Saddle installation with a water tight seal.



FLEXIBLE COUPLINGS

TSPK TECHNICAL SPECS

- Bentonite tape provides for a water tight seal
- Pressure tested to 10 PSI
- Rubber coated steel reinforcing bars apply even sealing pressure
- Two 300 series stainless steel clamps are "Slip-Lock" for fast and easy installation



Bentonite
tape
applied

Part No.	Description
TSPK-46	Pressure kit for Fernco Flexible Tap Saddles Fits model: TST-4, TST-6, TSW-4 and TSW-6

Special
"Slip-Lock"
band clamps





Concrete Manhole Adapters

Help eliminate leaks around pipes entering manhole walls.



CMA's are flexible enough to permit lateral pipe movement without destroying seal integrity. It is particularly useful for pipe to which concrete will not adhere, such as plastic pipe.

The CMA is made of elastomeric PVC, is corrosion proof and is unaffected by acid or alkali, however the CMA is subjected to many various conditions that are beyond the manufacturers control. High ground water tables, quality of grout, workmanship and field conditions can affect its ability to seal. Discretion must be used in its application and installation.

Part No.	Description
4 CMA	4" (101mm) I.D. Pipe
6 CMA	6" (152mm) I.D. Pipe
8 CMA	8" (203mm) I.D. Pipe
10 CMA	10" (254mm) I.D. Pipe
12 CMA	12" (304mm) I.D. Pipe

Due to the many varying factors that can influence the CMA's effectiveness as a seal, Fernco does not warrant this product as a positive water seal.

Large Diameter CMA's

For sewer pipe that is 8" and larger.



LDCMA's are flexible enough to permit lateral pipe movement without destroying seal integrity. It is particularly useful for pipe to which concrete will not adhere, such as plastic pipe.

The LDCMA is made of elastomeric PVC, is corrosion proof and is unaffected by acid or alkali, however the LDCMA is subjected to many various conditions that are beyond the manufacturers control. High ground water tables, quality of grout, workmanship and field conditions can affect its ability to seal. Discretion must be used in its application and installation.

Order by specifying the outside diameter (O.D.) of the pipe which is to receive the waterstop. Minimum size: 8.5 inches O.D. (55.6mm O.D.)

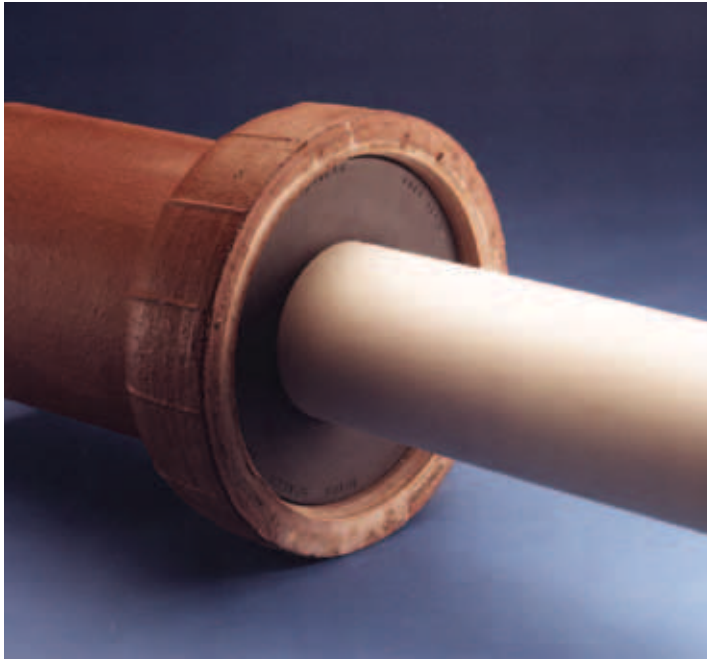
Due to the many varying factors that can influence the LDCMA effectiveness as a seal, Fernco does not warrant this product as a positive water seal.





Fernco Donuts

Sewer pipe compression joint seal.



Fernco Donuts are flexible PVC donut-shaped rings for the compression sealing of sewer pipe joints and DWV connections such as sockets, hubs, bells and spigots. They offer all of the properties necessary to create a strong, lasting joint.

Fernco Donuts are available in hundreds of sizes and configurations for use with most brands and types of piping material.

How To Order

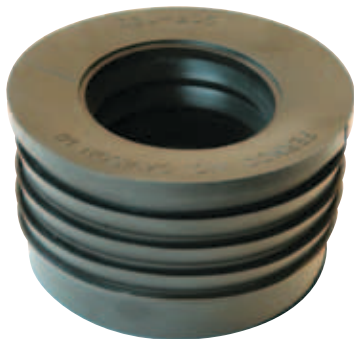
Donuts can be ordered by giving the size, material and type of connection you want to make. Donuts require specific information on the manufacturer of pipe. Our sales coordinators are trained to assist you.

Donuts can also be ordered by dimensions. Donuts seal by compression and have much less dimensional range than couplings. The bell, hub or socket dimensions must be given within 1/32" accuracy.

For plain end pipe connections, use a Fernco Flexible Coupling - Listed on pages 14-15.



DONUTS / O-RINGS



Just give us a call.
Our sales coordinators are trained to assist you in making the right part selection.





Multi-Tite Pipe Gaskets

Pipe gasket for service weight cast iron pipe.



SVG TECHNICAL SPECS

- Meets ASTM C564
- Multi rings on the outside make this gasket the easiest to install
- CARTON QUANTITIES ONLY



Part No.	Description
SVG-2	2" service weight cast iron
SVG-3	3" service weight cast iron
SVG-4	4" service weight cast iron
SVG-5	5" service weight cast iron
SVG-6	6" service weight cast iron
SVG-8	8" service weight cast iron
SVG-10	10" service weight cast iron
SVG-12	12" service weight cast iron
SVG-15	15" service weight cast iron

O-Rings



For connecting most 4" house pipe to 6" sewer pipe.

O-Rings provide a quick, simple means of making secure connections between most 4" house pipe and 6" sewer pipe.

Rolling Style Rubber O-Ring

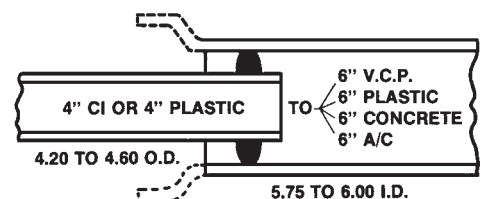
Part No.	Description
BR-64	6" sewer pipe to 4" house pipe

BR TECHNICAL SPECS

- Meets ASTM C 443 and C 425
- Accepted for use in connecting CI or plastic house pipe to clay, plastic, concrete or A/C sewer pipe

Installs Quickly And Easily

For 4.20 Thru 4.60 O.D. House Pipe
Fits 5.75 To 6.00 I.D. Sewer Pipe





Qwik Caps / Hose Bibbs

Quick, reusable caps for pipe ends, testing & cleanouts.

Qwik Caps offer a quick, easy way to cap pipe ends, cleanouts and open test pipes. Made of flexible PVC, they're suitable for above-ground or underground use, on cast iron, steel, copper or plastic piping. The convex face allows the cap to withstand greater pressure for testing purposes and minimizes ballooning.



Nominal Qwik Caps

Part No.	Nominal Pipe
QC-101	1-1/2" (38mm)
QC-102	2" (50mm)
QC-103	3" (76mm)
QC-104	4" (101mm)
QC-105	5" (127mm)
QC-106	6" (152mm)
QC-108	8" (203mm)
TC-10	10" (254mm)
QC-112	12" (305mm)

NEW Inventory

Part No.	ID	MIN	MAX
QC-0.85	0.85	0.79	0.91
QC-1.07	1.07	1.00	1.12
QC-1.38	1.37	1.22	1.50
QC-1.68	1.68	1.37	1.87
QC-2.75	2.75	2.18	2.93
QC-3.75	3.76	3.29	4.00
QC-4.75	4.82	4.32	5.05
QC-7.00	6.96	6.44	7.25
QC-9.00	9.01	8.59	9.34
QC-9.75	9.75	9.29	10.00
QC-10.75	10.74	10.22	11.05
QC-14.00	14.00	13.23	14.30

Custom sizes greater than 14" available - call for details.

Hose Bibbs

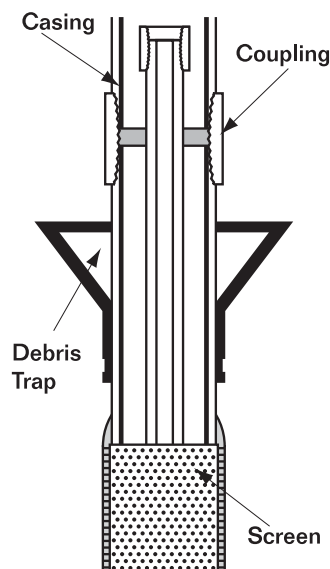


Part No.	Nominal Pipe Size
HBC-1	1-1/2" (38mm)
HBC-2	2" (50mm)
HBC-3	3" (76mm)
HBC-4	4" (101mm)

Water Well Debris Traps



Prevents loose debris from plugging pump suction area.



Debris Traps eliminate the common problem of loose dirt and stones plugging the pump suction area in water wells. The trap is quickly and easily installed over the well casing and secured with stainless steel clamp. Made of soft flexible PVC which conforms to irregularities of the drilled well. Does not crack or become brittle with age.



Part No.	Description
WC 500-238	2" casing x 5" well
WC 600-350	3" casing x 6" well
WC 600-450	4" casing x 6" well
WC 700-450	4" casing x 7" well
WC 700-562	5" casing x 7" well
WC 800-550	5" casing x 8" well
WC 900-550	5" casing x 9" well
WC 800-662	6" casing x 8" well
WC 1000-662	6" casing x 10" well



Flexible Qwik Traps

The easy way to replace plastic or metal drain traps.



There's no faster, easier way to replace 1-1/4" or 1-1/2" (32 or 38mm) plastic or metal drain traps than with Fernco's Qwik Trap. Its flexible PVC material adjusts to pipe misalignment and it installs quickly and securely with a common screwdriver or nutdriver. QwikTrap provides a long-lasting, leak free connection that resists freeze damage, making it perfect for vacation homes. Just give it a squeeze to clean, with no drain tools or drain cleaners needed.



Packaged for counter display with complete application and installation instructions.

Part No.	Description
FT-150	1-1/4" or 1-1/2" drain trap

Drain & Trap Connectors



Connect tubular traps to common household drain pipe.

Drain & Trap Connectors are ideal for new installation, repairs and alterations. They can be installed quickly and easily without special tools, gluing, threading or soldering. Simply place the ends over the pipes and tighten the rustproof clamps.

The DTC-150 size connects 1-1/4" or 1-1/2" tubular traps to all common 1-1/4" or 1-1/2" drain piping. The DTC-215 size connects 1-1/4" or 1-1/2" tubular traps to all common 2" drain piping, except copper. (For 2" copper, use DTC-150.)



Packaged for counter display with complete application and installation instructions.



Part No.	Description
DTC-150	1-1/2" x 1-1/2" or 1-1/4" (38mm x 38mm or 32mm)
DTC-215	2" x 1-1/2" or 1-1/4" (50mm x 38mm or 32mm)



Tubular Drain Pipe Connector

For any combination of 1½" or 1¼" tubular drain pipe.



Fernco Tubular Drain Pipe Connectors offer a quick, easy way to extend, alter or repair any combination of 1-1/2" or 1-1/4" (32 or 38mm) brass or plastic drain pipe. Whether you're connecting brass to brass, plastic to plastic, or brass to plastic, you get an economical, leak free seal. Installation is fast and simple. The flexible elastomeric PVC material is formulated for drain use and provides a strong, reliable connection that's made in minutes, but lasts for years.

← Can be cut shorter for limited space pipe connections.



Packaged for counter display with complete application and installation instructions.

Part No.	Description
TC-150	1-1/4" or 1-1/2" (32 or 38mm) tubular drain pipe

Dishwasher Drain Connector



Connect dishwasher hose to sink drain or garbage disposer.



← Can be cut for different size pipe and hose applications of 1/2" or 3/4".

Dishwasher Drain Connector is a quick, simple way to connect a dishwasher hose to sink drains and garbage disposers. The strong elastomeric PVC material is engineered for years of leak free, trouble-free service.



Packaged for counter display with complete application and installation instructions.

Part No.	Description
DWC-100	Connects dishwasher hose to sink drain or garbage disposer - 1/2" x 3/4" (13mm x 19mm)

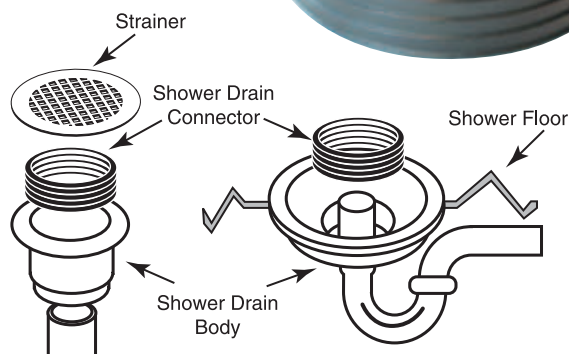


Shower Drain Connectors

Connect 2" drain pipe to shower drain bodies.



Shower Drain Connectors connect 2" DWV plastic, Sch. 40, steel or X.H. (extra-heavy) cast iron pipe to shower drain bodies. They reduce the time and cost of installation because no special tools, gluing, threading or lead caulking are required.



Part No.	Shower Drain Body
SD-200	American Brass & Aluminum
SD-200	Armstrong - requires cutting to 3/4" height)
SD-200	Casper-Model 101-101P
SD-200	Casper-Model 101 BR
SD-200	Garvin Model 475
SD-200	Intercon
SD-200	Kohler
SD-210	Mustee 1-piece molded shower base
SD-210	Owens Corning 1-piece molded shower base
SD-200	Schau Mfg. Brass Model 1524

Fix-A-Flange



For the repair of broken toilet flanges.

RESIDENTIAL



FIX-A-FLANGE eliminates the need to replace broken toilet flanges, saving time and money. Simply place the flange under the broken area of the ring and tighten the nut.



Packaged for counter display
with complete application and
installation instructions.

- Repairs broken toilet flanges without costly replacement
- Suitable for all cast iron, plastic, copper & brass toilet flanges
- Stops wobbly, leaking toilets
- Installs fast & easy

Part No.	Description
SF-100	Fix-A-Flange toilet flange repair





Utility Connectors

Connect small drain lines to 1-1/2" DWV Plastic Socket.



These one piece connectors are designed for quick, easy connections. With a simple press fit (no tools needed) they connect 1", 3/4" or 1/2" CPVC and copper pipe to 1-1/2" DWV Schedule 40 plastic sockets (ABS or PVC).



Part No.	Description
UC-1550	1/2" CPVC or Copper to 1-1/2" DWV plastic socket
UC-1575	3/4" CPVC or Copper to 1-1/2" DWV plastic socket
UC-1510	1" CPVC or Copper to 1-1/2" DWV plastic socket

PLEASE NOTE: The utility connector is engineered to function in limited low-pressure application (5 PSI or 12 ft. head).

DO NOT USE in pressure water systems.

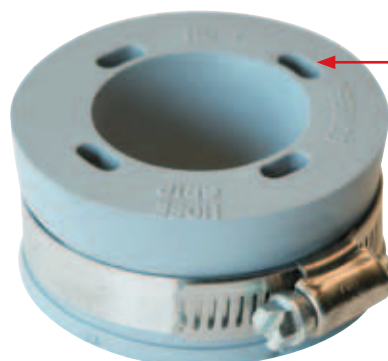
Hose Grip Clothes Washer Connector

Prevents accidental washer hose spills.



Holds washing machine hoses securely in their standpipe drains. Loose washer hoses have the tendency to "pull" themselves out of the laundry standpipe and spew water all over the floor.

Fits both 2" and 1-1/2" standpipes and most washing machine hoses from 1" to 1-7/16" diameters. Made from strong, flexible PVC for years of trouble-free use.



The Hose Grip has 4 vents to allow for air flow during discharge from the washer.

Part No.	Description
HG-1	Fits 2" or 1-1/2" standpipe, to 1" through 1-7/16" washer hose





Downspout Connectors

Seals out problem causing debris and pests.



Fernco Flexible Downspout Connectors stretch easily over most common downspouts and drain pipes to seal out problem-causing debris and pests. Installation is fast and simple. For use with aluminum, steel or plastic downspouts and cast iron, spiral, corrugated or plastic drain pipe.

Part No.	Drain Pipe Size	Downspout
DSC-43	4" (101mm)	3" x 2" (76 x 50mm) rectangular OR
DSC-33	3" (76mm)	3" (76mm) round OR 2-1/2" (63.5mm) square
DSC-534	4" (101mm)	5" x 3" rectangular

Universal Downspout Connectors

For the connection of standard and non-standard downspouts.



The unique design of Fernco's Universal Downspout Connector allows for the easy connection of standard and non-standard downspouts to 6" sewer pipe and even allow for offset installations.

UDSC-6C 6" Cap

- Fits the OD of PVC and Cast Iron ONLY.
- For DWV pipe exposed above ground.
- For ANY downspout with a diagonal measurement of 6" or less.

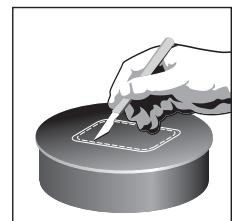
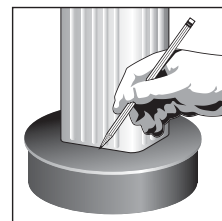


UDSC-6P 6" Plug

- Fits in ANY 6" ID sewer pipe.
- For DWV pipe cut off at grade level.
- For ANY downspout with a diagonal measurement of 5.75" or less.

UDSC TECHNICAL SPECS

- Commercial or Residential
- NO Shrinking or Cracking
- NO Infiltration
- Positive Seal
- Rot and Root Proof
- Allows Offset Installation
- Simple trace and cut installation



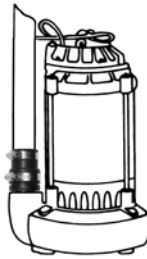
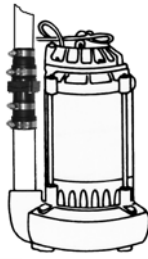


Sump Pump Check Valves

Reduces sump pump wear and tear.



Flexible couplings can be flipped over to fit 1-1/4" OR 1-1/2" drain pipe on CV-125T, CV-150T and CV-150 models.



Fernco check valves allow for the unrestricted flow of water up and out through the pipes, but when the pump turns off, the water in the pipes doesn't flow backwards back into the sump pit causing more work and wear on the sump pump.

CV TECHNICAL SPECS

- Installs with Fernco flexible couplings for fast and easy installation
- Full flow positive sealing flapper design
- Heavy duty for long life
- Eliminates backflow and wear on pump
- Durable thermoplastic body

Part No.	Description
CV-125T	1-1/4" male pipe thread x 1-1/2" or 1-1/4"
CV-150T	1-1/2" male pipe thread x 1-1/2" or 1-1/4"
CV-150	1-1/4" or 1-1/2" x 1-1/4" or 1-1/2"
CV-200	2" x 2"

Torque Wrenches

For 5/16" hex head screws



TW-100 5/16" Ratchet Torque Wrench

Built in reversing lever is preset to 60 in. lbs. torque. Recommended for Fernco Couplings and other banded Fernco products. It has a chrome plated shank, with all metal construction.



TW-200 5/16" Ratchet Torque Wrench

Finger grip reversing collar is preset to 60 in. lbs. torque. Recommended for Fernco Couplings and other banded Fernco products. It has a chrome plated shank, with all metal construction.

RESIDENTIAL



Plumbing Market Sales Reps

1. David Gooding, Inc.

Brockton, MA
(508) 894-2000
ME, NH, VT, MA, RI, CT

2. Empire State Associates

Ballston Spa, NY
(518) 602-0271
New York State

3. Altherm, Inc.

Englewood, NJ
(201) 871-0500
New York City, Long Island,
Northern New Jersey

4. Rich-Tomkins Company, Inc.

Aston, PA
(610) 859-3552
E. PA, Southern NJ, DE

5. Fehr & Howard Sales, Inc.

Greensburg, PA
(724) 838-9394
West PA & WV

6. Lowder Sales

Lewis Center, OH
(800) 221-5650
OH

7. Lozuaway & Associates

Grand Blanc, MI
(810) 234-1635
MI, Lower MI

8. Ashworth—Train Assoc.

Indianapolis, IN
(317) 722-1950
IN

9. Kast Marketing, Inc.

Bensonville, IL
(630) 227-0600
N. IL

10. McCullough & Associates

Edina, MN
(952) 946-0126
MN, WI, ND, SD, Upper MI

11. Mankin & Associates

Earlham, IA
(515) 758-2956
IA, NE

12. Mack McClain & Associates

Olathe, KS
(913) 339-6677
KS, W. MO

13. T.M. Sales

Denver, CO
(303) 375-1515
CO, MT, WY,

14. McGregor & Associates

West Jordan, UT
(801) 566-8225
UT, ID

15. Gordon & Associates

Vancouver, WA
(360) 566-1470
WA, OR, AK

16. RD/Kincaide & Assoc.

Benicia, CA
(707) 745-3655
N. CA & N. NV

17. Carrhill Company

City of Commerce, CA
(323) 724-6087
S. CA, Clark County, NV, HI

18. BC Sales

Goodyear, AZ
(623) 810-2334
AZ

19. Stan Roberts & Assoc., Inc.

Houston, TX
(713) 224-9845
South TX

Dallas, TX

(214) 637-2816
North TX

20. PSA

Little Rock, AR
(501) 312-8700
AR

21. OK! Sales

Broken Arrow, OK
(405) 794-5200
Tulsa, OK

22. Mack McClain

St. Louis, MO
(314) 894-8188
S. IL & E. MO

23. Woolf-Harris

Mandeville, LA
(504) 773-8733
LA, MS

24. Wm. M. McClain Co, Inc.

Nashville, TN
(615) 226-9601
TN

25. Banks & Head Agency

Anniston, AL
(256) 235-9000
AL & Panhandle FL

26. United Sales Agency

Marietta, GA
(770) 514-7444
GA

27. Carr Company

Boca Raton, FL
(561) 997-0999
FL, except Panhandle

28. Pro Marketing

Spartanburg, SC
(864) 578-4334
NC, SC

29. Barger & Assoc. / North

Yorktown, MD
(888) 697-3755
VA, D.C., MD

30. Pinnacle Marketing

Albuquerque, NM
(502) 345-2700
NM

31. Kemper Sales & Assoc.

Nicholasville, KY
(859) 881-8624
KY

PUERTO RICO

33. Inter American Builders Agencies

Carolina, PR
(787) 752-0200
Puerto Rico

MEXICO

34. Ardent Sales

Long Beach, CA
(562) 552-4169
Mexico

CANADA

40. Barclay Sales LTD.

Port Coquitlam, BC
(604) 945-1010

41. Spectrum Sales Agencies 1982 LTD.

Calgary, Alberta
(403) 255-8332

Edmonton, Alberta
(780) 486-2525

42. Jones Goodridge

Winnipeg, Manitoba
(204) 632-6221

Regina, Sask
(306) 530-9056

Saskatoon, Sask
(306) 933-4377

43. Showerline Sales LTD.

London, Ontario
(519) 657-2694

Waterloo, Ontario
(519) 885-1578

44. Armco Agencies LTD.

Mississauga, Ontario
(905) 238-8448

45. Pelco Sales

Carp, Ontario
(613) 256-5596

46. Northern Mechanical Sales

Garson, Ontario
(705) 693-2715

47. Agencies J. Pierre Sylvain, Inc.

Boucherville, Que.
(450) 655-9588

Quebec, PQ.
(418) 570-0703

48. NerohTek Sales

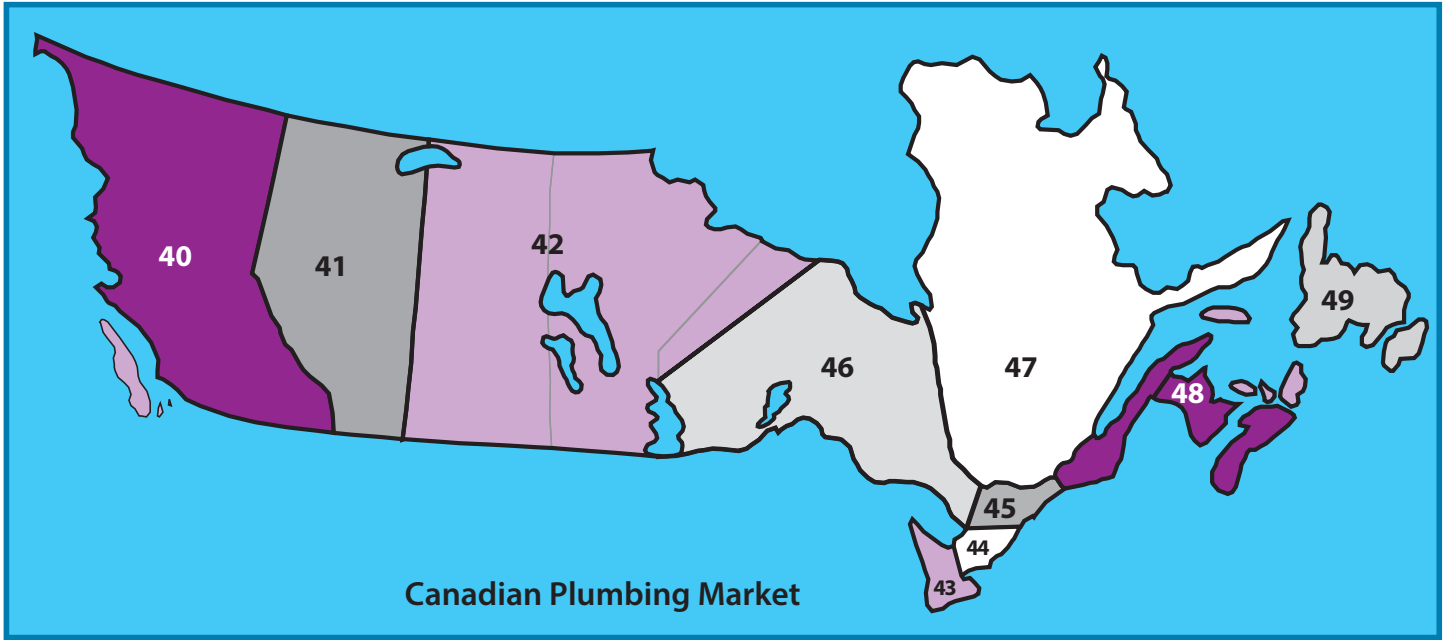
Windsor, N.S.
(902) 869-0103

49. Par Four Plumbing

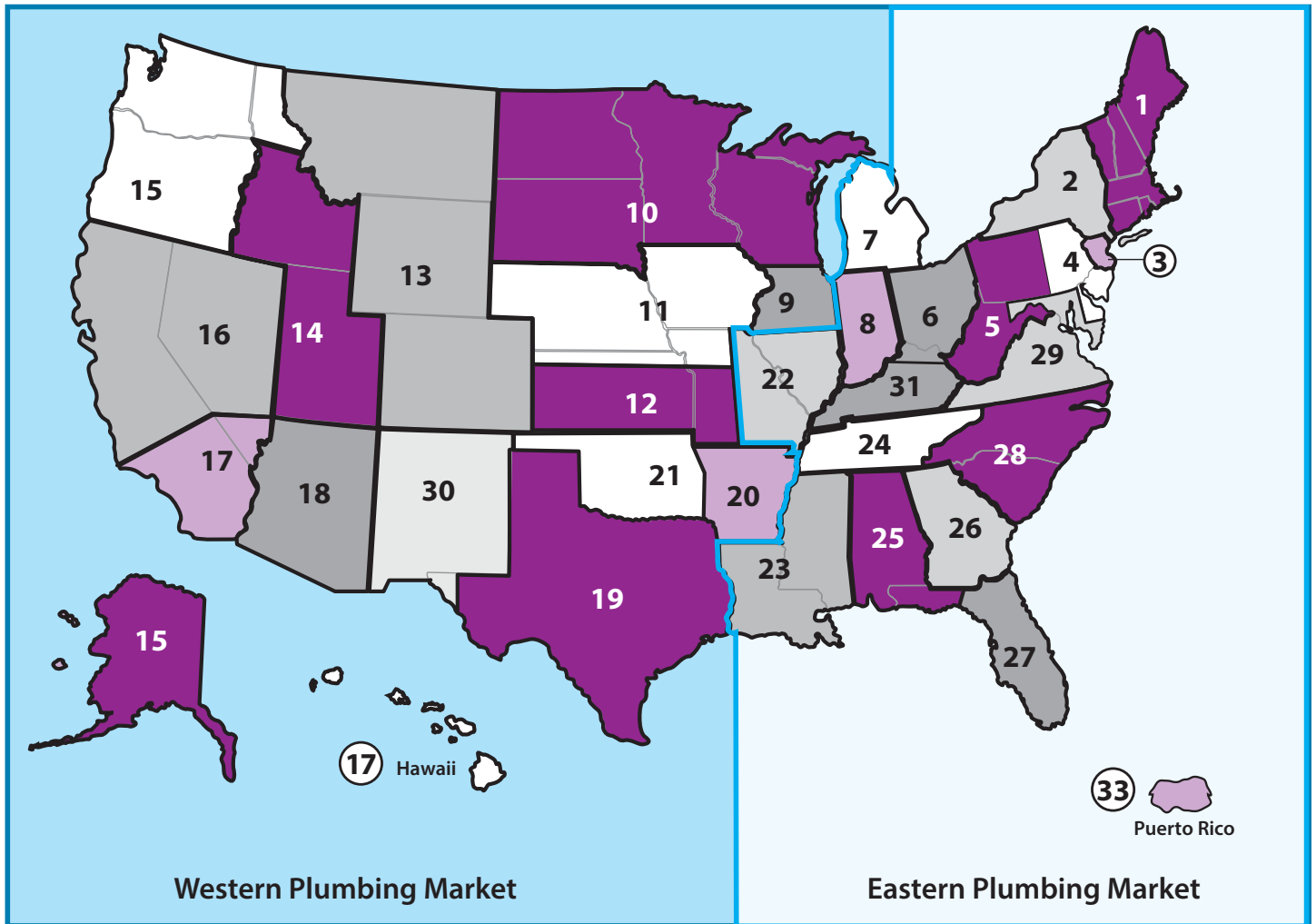
St. Johns, N.F.
(709) 739-7177



Plumbing Market Sales Reps



Canadian Plumbing Market



Western Plumbing Market

Eastern Plumbing Market

SALES REPS / CHARTS

Waterworks Market Sales Reps

1. David Gooding, Inc.

Brockton, MA
(508) 894-2000
ME, NH, VT, MA, RI, CT

2. Empire State Associates

Ballston Spa, NY
(518) 602-0271
New York State, Erie PA

3. Altherm, Inc.

Englewood, NJ
(201) 871-0500
New York City, Long Island
Northern New Jersey

4. Charles Morrow & Assoc.

Buckhannon, WV
(304) 472-9005
E. PA, S. NJ, DE,
VA, D.C., MD

5. Fehr & Howard Sales, Inc.

Greensburg, PA
(724) 838-9394
W. PA & WV

6. Hydrosource

Chagrin Falls, OH
(440) 247-9150
LOWER MI, IN, OH

7. Eaton Mechanical Sales

Prairie View, IL
(847) 980-7253
N. IL

8. Mack McClain & Associates

Olathe, KS
(913) 339-6677
KS, W. MO

St. Louis, MO
(314) 894-8188
S. IL, E. MO

9. Mankin & Associates

Earlham, IA
(515) 758-2956
IA, NE

10. McCullough & Associates

Eden Prairie, MN
(952) 946-0126
MN, WI, ND, SD, Upper MI

11. Repmasters, Inc.

Commerce City, CO
(303) 286-7575
CO, MT, WY

12. McGregor & Associates

West Jordan, UT
(801) 566-8225
UT, ID

13. Gordon & Associates

Vancouver, WA
(360) 566-1470
WA, OR, AK

14. RD/Kincaide & Assoc.

Benicia, CA
(707) 745-3655
N. CA & N. NV

15. Stan Roberts & Assoc., Inc.

Houston, TX
(713) 224-9845
South TX, except El Paso, TX

Dallas, TX
(214) 637-2816
North TX

16. PSA

Little Rock, AR
(501) 312-8700
AR

17. OKI Sales

Broken Arrow, OK
(405) 794-5200
OK

18. Billingsley & Associates

Kenner, LA
(504) 602-8100
LA, MS

19. Wm. M. McClain Co, Inc.

Nashville, TN
(615) 226-9601
TN

20. Banks & Head Agency

Anniston, AL
(256) 235-9000
AL

21. Buchanan Sales

Kennesaw, GA
(770) 425-6028
GA

22. L.J. Ruffin & Associates

Orlando, FL
(407) 291-2341
FL

23. Ultratech Water Resources

Shelby, NC
(704) 445-0220
NC, SC

24. Pinnacle Marketing

Albuquerque, NM
(502) 345-2700
NM, El Paso, TX

25. Kemper Sales & Assoc.

Nicholasville, KY
(859) 881-8624
KY

26. Fernco, Inc.

Davison, MI
(810) 503-9000
Clark County, NV

27. Mainline Sales, Inc.

Anaheim, CA
(877) 300-9346
S. CA, HI

Phoenix, AZ
(888)304-3219
AZ

PUERTO RICO

28. Inter American Builders Agencies

Carolina, PR
(787) 752-0200
Puerto Rico

MEXICO

29. Ardent Sales

Long Beach, CA
(562) 552-4169
Mexico

CANADA

40. Barclay Sales LTD.

Port Coquitlam, BC
(604) 945-1010

41. Spectrum Sales Agencies 1982 LTD.

Calgary, Alberta
(403) 255-8332

Edmonton, Alberta
(780) 486-2525

42. Jones Goodridge

Winnipeg, Manitoba
(204) 632-6221

Regina, Sask
(306) 530-9056

Saskatoon, Sask
(306) 933-4377

43. Showerline Sales LTD.

London, Ontario
(519) 657-2694

Waterloo, Ontario
(519) 885-1578

44. Armco Agencies LTD.

Mississauga, Ontario
(905) 238-8448

45. Pelco Sales

Carp, Ontario
(613) 256-5596

46. Northern Mechanical Sales

Garson, Ontario
(705) 693-2715

47. Agencies J. Pierre Sylvain, Inc.

Boucherville, Que.
(450) 655-9588

Quebec, PQ.
(418) 570-0703

48. NerohTek Sales

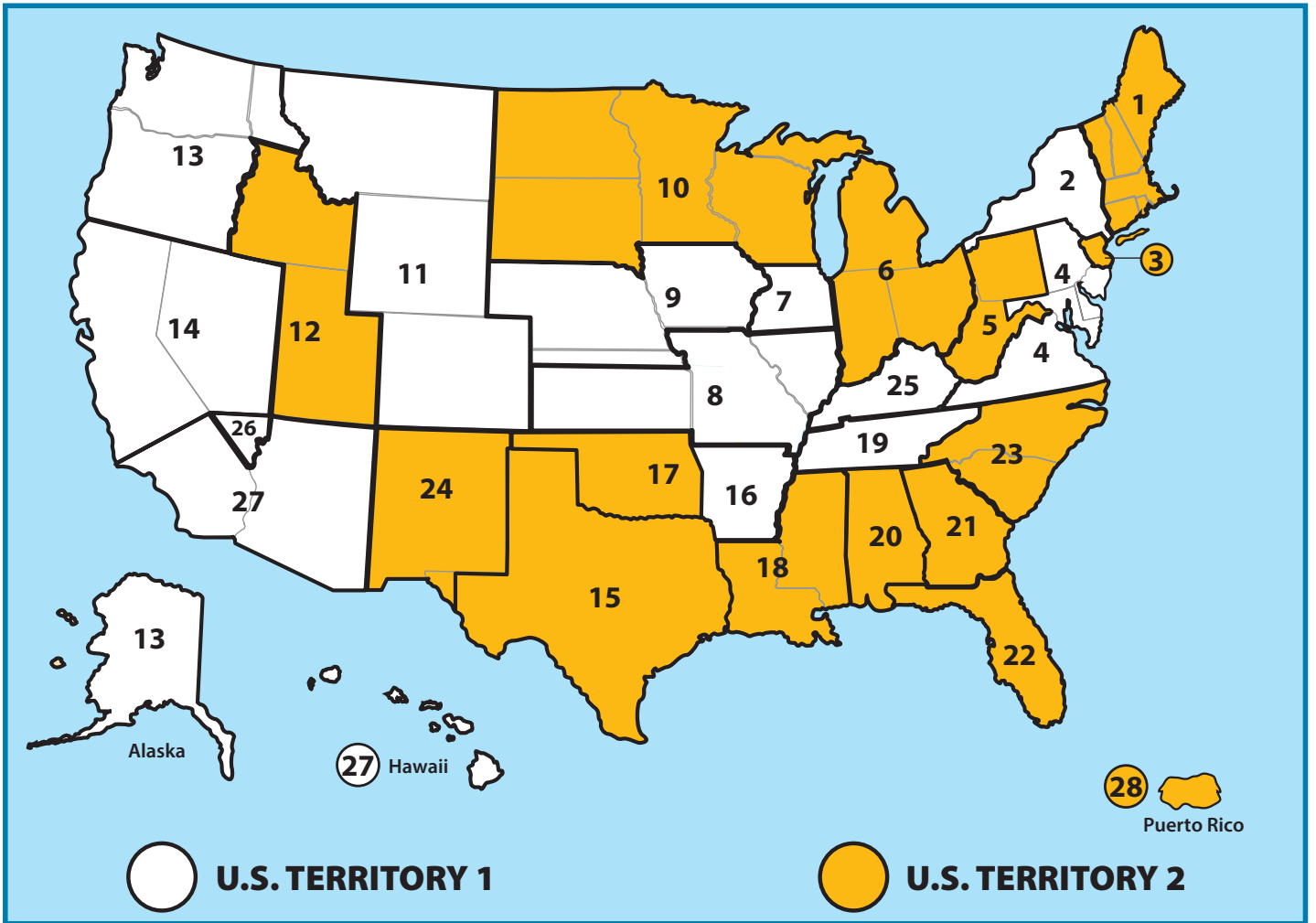
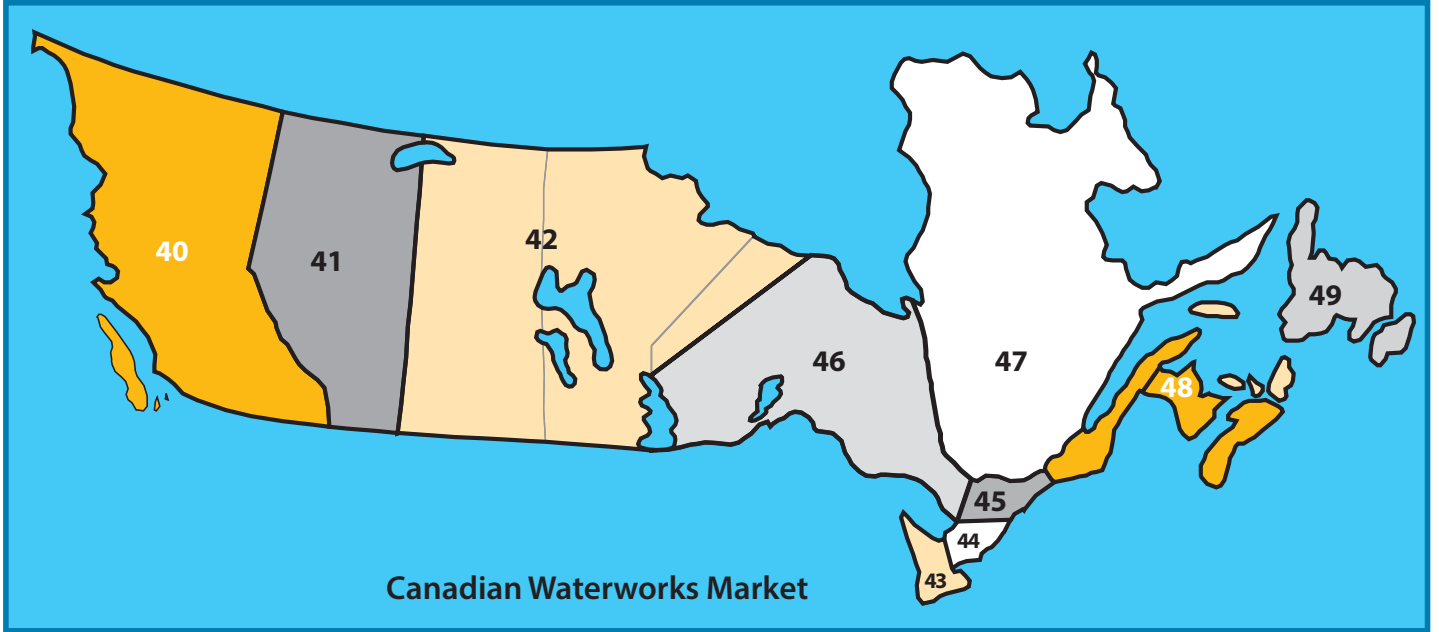
Windsor, N.S.
(902) 869-0103

49. Par Four Plumbing

St. Johns, N.F.
(709) 739-7177



Waterworks Market Sales Reps



SALES REPS / CHARTS

Standard Pipe Sizes

Outside Diameter

CLAY															
	3/4"	1"	1 1/4"	1 1/2"	2"	2 1/2"	3"	3 1/2"	4"	5"	6"	8"	10"	12"	14"
Eastern Standard Clay									5.23	6.31	7.44	9.84	11.99	14.36	
Pacific Clay									5.36		7.93	9.93	12.88	15.30	
Gladding McBean Clay									5.36		7.82	9.99	12.47	14.52	
Building Products Clay									5.20		7.75	9.80	12.40	14.40	
Logan Clay									4.92		7.52	9.70	12.08	14.36	
CAST AND DUCTILE IRON															
Ductile Iron							3.96		4.80		6.90	9.05	11.10	13.20	15.30
Duriron				2.19	2.69		3.78		4.76		6.69	9.02	11.25	13.25	
Extra Heavy Cast Iron					2.38		3.50		4.50	5.50	6.50	8.62	10.75	12.75	
Service Weight Cast Iron					2.30		3.30		4.30	5.30	6.30	8.38	10.50	12.50	
No Hub Cast Iron				1.90	2.35		3.35		4.38	5.30	6.30	8.38	10.56	12.50	
STEEL															
Stainless Steel	1.05	1.315	1.66	1.90	2.375	2.875	3.50	4.00	4.50	5.563	6.625	8.625	10.75	12.75	
Steel	1.05	1.315	1.66	1.90	2.375	2.875	3.50	4.00	4.50	5.563	6.625	8.625	10.75	12.75	14.00
COPPER															
Rigid Copper (TYPES K,L,M)	0.875	1.125	1.375	1.625	2.125	2.625	3.125	3.625	4.125	5.125	6.125	8.125	10.125	12.125	
PLASTIC															
Thinwall Plastic (S&D)							3.25		4.125	5.30	6.27	8.16			
SDR-35 ASTM-3034							3.25		4.22		6.28	8.40	10.50	12.50	
Plastic Schedule 40, 80, 120	1.05	1.31	1.66	1.90	2.375	2.875	3.50	4.00	4.50	5.563	6.625	8.625	10.75	12.75	14.00
PS-46, PS-75, PS-115															
ULTRA RIB™												8.81	11.02	13.10	
ULTRA CORR™															
C900 AND C905									4.80		6.90	9.05	11.10	13.20	15.30
CONTECH A-2000™									4.30		6.42	8.60	10.79	12.80	
Royal Kor Flo™												8.60	10.78	12.79	
ARMCO TRUSS												9.40	11.80	14.10	
ASBESTOS CEMENT (A/C)															
Asbestos Cement Sewer Class 1500									4.81	5.90	6.92	9.02	11.12	13.20	15.30
Asbestos Cement Sewer Class 1500, 2400, 3300, 4000, 5000 MIN/MAX Dimensions															
CONCRETE															
CONCRETE ** Dimensions will vary by manufacturer and class of pipe**									5.50 MIN	6.50 MIN	7.75 MIN	10.00 MIN	12.45 MIN	14.50 MIN	
ORANGEBURG															
Orangeburg Bituminous Fiber (Actual sizes may be larger than stated size)									4.64	5.82	6.96	9.14			



FOR REFERENCE PURPOSES ONLY

CLAY																
15"	16"	18"	20"	21"	22"	24"	27"	30"	32"	33"	36"	42"	48"	54"	60"	64"
18.20		21.90		25.91												
18.60		22.40		26.40		30.10	33.90									
18.03		21.47		25.22												
18.25		22.25		25.88		30.30										
17.80		21.48		25.54		29.30										
CAST AND DUCTILE IRON																
	17.40	19.50	21.60			25.80		32.00			38.30	44.50	50.80	57.56	61.61	65.67
16.75																
15.88																
15.62																
15.83																
STEEL																
	16.00	18.00	20.00			24.00										
COPPER																
PLASTIC																
15.30																
	16.00	18.00	20.00			24.00										
		18.70		22.05		24.80	27.95	32.00			38.30	44.50	50.80			
15.91		19.32		21.73	22.92	25.48	28.50									
						25.58	28.86	32.15			38.74					
	17.40	19.50	21.60			25.80		32.00			38.30	44.50	50.80			
15.66		19.15			22.59	25.58		32.15			38.74					
15.65		19.15		22.58		25.58		32.15			38.76					
ASBESTOS CEMENT (A/C)																
16.30	17.40															
		19.54/ 20.36	21.66/ 22.32			25.78/ 26.60		32.34/ 32.90								
CONCRETE																
19.60 MIN		22.50 MIN		26.00 MIN		30.00 MIN	32.00 MIN									
ORANGEBURG																

SALES REPS / CHARTS



Acid Resistance Chart

Maximum test pressure: 4.3 PSI (29.6 KPA)

Maximum operating temperature: 140° F nonconsistent

R—Recommended N—Not Recommended

Reagent	Flexible Coupling 70°F	Proflex 70°F	Reagent	Flexible Coupling 70°F	Proflex 70°F	Reagent	Flexible Coupling 70°F	Proflex 70°F
Acetic Acid 20%	R	R	Disodium Phosphate	N	N	Silver Cyanide	R	R
Acetic Acid 80%	N	N	Distilled Water	R	R	Silver Nitrate	R	R
Acetone	N	N	Ethers	N	N	Silver Sulfate	R	R
Alcohol (Methyl or Ethyl)	R	R	Ethyl Acetate	N	N	Sodium Bicarbonate	R	R
Aluminum Chloride	R	R	Ethylene Chloride	N	N	Sodium Bisulfite	R	R
Aluminum Sulfate	R	R	Ethylene Glycol	R	R	Sodium Carbonate	R	R
Alums	R	R	Fatty Acids (C6)	R	R	Sodium Cyanide	R	R
Ammonia Gas (Dry)	R	R	Ferric Chloride	R	R	Sodium Ferrocyanide	R	R
Ammonium Chloride	R	R	Ferric Sulfate	R	R	Sodium Hydroxide	R	R
Ammonium Hydroxide	R	R	Fluorine (Gas Wet)	N	N	Sodium Hypochlorite	R	N
Ammonium Nitrate	R	R	Formaldehyde (20%)	R	R	Sodium Sulfate	R	R
Ammonium Phosphate	R	R	Formic Acid (10%)	R	R	Sodium Sulfide	R	R
Ammonium Sulfate	R	R	Freon 12 Dry	N	R	Sodium Sulfite	R	R
Ammonium Sulfide	R	R	Fruit Juices & Pulp	R	R	Sodium Thiosulfate	R	N
Amyl Chloride	N	N	Furfural	N	N	Stannic Chloride	R	N
Aniline	N	N	Gasoline (Refined)	N	N	Stannous Chloride	R	R
Aqua Regia	N	N	Glucose	R	R	Stearic Acid	R	R
Barium Chloride	R	R	Glycerine	R	R	Sulfite Liquor	R	R
Barium Hydroxide	R	R	Hydrobromic Acid (20%)	R	N	Sulfur	R	N
Barium Sulfate	R	R	Hydrochloric Acid	R	N	Sulfur Dioxide (Dry)	R	N
Barium Sulfide	R	R	Hydrocyanic Acid	R	R	Sulfur Dioxide (Wet)	R	N
Beer	R	R	Hydroquinone	R	N	Sulfuric Acid 50%	R	R
Beet Sugar Liquors	R	R	Hypochlorous Acid	R	N	Sulfuric Acid 70%	N	N
Benzene	N	N	Iodine	N	N	Sulfuric Acid 93%	N	N
Benzoic Acid	R	N	Kerosene	N	N	Sulfurous Acid	R	N
Black Liquor	R	R	Lactic Acid 25%	R	R	Tannic Acid	R	R
Bleach 12.5% active Cl ₂	R	N	Linseed Oil	R	R	Tanning Liquors	R	R
Boric Acid	R	R	Liquors	N	N	Tartaric Acid	R	R
Bromic Acid	R	N	Machine Oil	N	N	Toluene	N	N
Bromine Water	N	N	Magnesium Chloride	R	R	Trichloroethylene	N	N
Butane	N	R	Magnesium Sulfate	R	R	Triethanolamine	N	N
Butyric Acid	N	N	Maleic Acid	N	N	Trisodium Phosphate	R	R
Calcium Carbonate	R	R	Methyl Chloride	N	N	Turpentine	N	N
Calcium Chloride	R	R	Methyl Ethyl Ketone	N	N	Urea	R	R
Calcium Hydroxide	R	R	Milk	R	R	Urine	R	R
Calcium Hypochlorite	R	N	Mineral Oils	N	R	Vinegar	R	R
Calcium Sulfate	R	R	Muriatic Acid	R	N	Water (Fresh)	R	R
Cane Sugar Liquors	R	R	Nickel Chloride	R	R	Water (Salt)	R	R
Carbon Bisulfide	N	N	Nickel Sulfate	R	R	Whiskey	R	R
Carbon Dioxide	R	R	Nitric Acid 0-40%	R	N	Wines	R	R
Carbon Monoxide	R	R	Nitric Acid 41-100%	N	N	Xylene	N	N
Carbon Tetrachloride	N	N	Oleic Acid	N	N	Zinc Chloride	R	R
Carbon Acid	R	R	Oleum	N	N	Zinc Sulfate	R	R
Caustic Soda	R	N	Oxalic Acid	R	R			
Caustic Soda 50%	R	R	Palmitic Acid 10%	R	R			
Caustic Potash	R	R	Perchloric Acid	N	N			
Chloride (Dry)	N	N	Petroleum Oils (Sour)	N	N			
Chloride (Wet)	N	N	Phenol 5%	N	N			
Chloroacetic Acid	N	N	Phosphorous Trichloride	N	N			
Chlorobenzene	N	N	Photographic Solutions	R	R			
Chloroform	N	N	Picric Acid	N	N			
Chromic Acid 10%	R	N	Plating Solution	R	R			
Chromic Acid 50%	N	N	Potassium Carbonate	R	R			
Citric Acid	R	R	Potassium Chlorate	R	R			
Copper Chloride	R	R	Potassium Chloride	R	R			
Copper Cyanide	R	R	Potassium Cyanide	R	R			
Copper Nitrate	R	R	Potassium Dichromate	R	R			
Copper Sulfate	R	R	Potassium Hydroxide	R	R			
Cottonseed Oil	R	R	Potassium Permanganate 10%	R	R			
Cresol	N	N	Potassium Sulfate	R	R			
Cyclohexanol	N	R	Propane Gas	R	R			
Cyclohexanone	N	N	Propyl Alcohol	R	R			
Dimethylamine	N	N	Sea Water	R	R			
Diocetyl Pthalate	N	N	Sewerage	R	R			

NOTE: The data listed in this table is only to give information in regard to general use and does not constitute a guarantee. Materials should be tested under actual service to determine suitability for a particular purpose.



Fernco, Inc.

300 S. Dayton St.
Davison, MI 48423
www.fernco.com
P: (810) 503-9000
F: (810) 503-1015

Fernco West

855 Linda Way
Sparks, NV 89431
www.fernco.com
P: (810) 503-9000
F: (810) 503-1015

Fernco Connectors LTD

850 Phillip Street E.
Sarnia, Ontario N7T 1Z6
www.ferncoconnectors.ca
P: (519) 332-6711
F: (519) 332-8610

TERMS

All prices shown are Trade/List, stated in U.S. currency and subject to change without notice.

MINIMUM INVOICE - None

PAYMENT TERMS - 1% 10th prox. NET 30 days unless otherwise stated. Shortage claim must be made to Fernco within 15 days after delivery.

FREIGHT TERMS - Prepaid and allowed on net orders of \$750.00 or more unless otherwise stated. All others will be prepaid and billed. Claims for loss or damage must be filed with the freight carrier.

SALES POLICY - Fernco products are available to any legitimate wholesaler, pipe manufacturer or distributor with approved credit.

RETURN POLICY - All returns must be preceded by factory authorization.

Minimum 15% restocking charge will apply to all standard Fernco products. All materials returned to Fernco should be in original cartons and be in resalable condition. This amount is subject to change depending on condition of items returned to Fernco.

- Fernco Custom Parts are Non-Returnable.
- Freight must be prepaid on all return shipments.
- Returns will not be allowed after 90 days of invoice date.

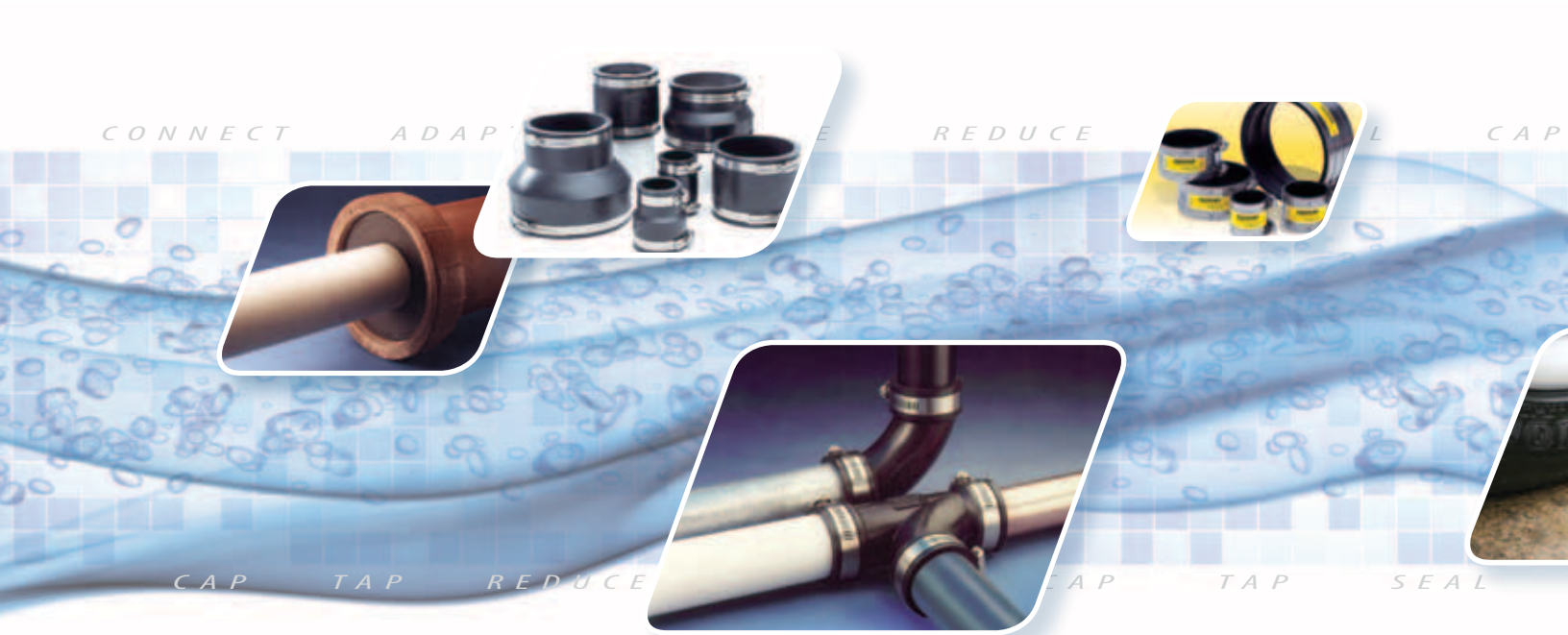
LIMITED WARRANTY

Fernco warrants its product(s) against defects in workmanship or materials for one (1) year from date of original purchase (unless a shorter period is expressly provided with respect to a particular product). Fernco's total liability under any warranty, or any other claim arising in any way from the product or its use, is limited, at Fernco's option, to refund or replacement of any such product returned to Fernco within the one-year warranty period and determined by Fernco to be defective. To the extent permitted by law, Fernco disclaims and excludes any and all other warranties, express or implied, including without limitation any implied warranty of merchantability or fitness for a particular purpose, and in no event shall Fernco be liable for special, incidental or consequential damages. Failure to follow the installation instructions provided by Fernco will void this warranty. To make a warranty claim, purchaser should have the original receipt and contact Fernco, Inc. Customer Service Department, 810 503-9000. Purchaser is responsible for any shipping charges.

If state law preserves implied warranties, including implied warranties of merchantability and fitness for a particular purpose, such warranties are limited to one-year from the date of the original purchase and as otherwise set forth above. Some states do not allow limitations on how long an implied warranty lasts, or the exclusion of incidental or consequential damages, so such limitation(s) or exclusion(s) may not apply to you.

This written warranty gives you specific legal rights, and you may also have other rights which vary from state to state.





PROVEN. PREFERRED. **PROFESSIONAL.**

